



# MEF-2D Polyclonal Antibody

<b>Catalog No</b>	BYab-01867
<b>Isotype</b>	IgG
<b>Reactivity</b>	Human;Mouse;Rat
<b>Applications</b>	IHC;IF;ELISA
<b>Gene Name</b>	MEF2D
<b>Protein Name</b>	Myocyte-specific enhancer factor 2D
<b>Immunogen</b>	The antiserum was produced against synthesized peptide derived from human MEF2D. AA range:410-459
<b>Specificity</b>	MEF-2D Polyclonal Antibody detects endogenous levels of MEF-2D protein.
<b>Formulation</b>	Liquid in PBS containing 50% glycerol, 0.5% BSA and 0.02% sodium azide.
<b>Source</b>	Polyclonal, Rabbit,IgG
<b>Purification</b>	The antibody was affinity-purified from rabbit antiserum by affinity-chromatography using epitope-specific immunogen.
<b>Dilution</b>	IHC: 1/100 - 1/300. ELISA: 1/5000.. IF 1:50-200
<b>Concentration</b>	1 mg/ml
<b>Purity</b>	≥90%
<b>Storage Stability</b>	-20°C/1 year
<b>Synonyms</b>	MEF2D; Myocyte-specific enhancer factor 2D
<b>Observed Band</b>	
<b>Cell Pathway</b>	Nucleus . Translocated by HDAC4 to nuclear dots.
<b>Tissue Specificity</b>	Blood,Brain,Epithelium,Eye,Myocardium,Testis,
<b>Function</b>	developmental stage:Present in myotubes and also in undifferentiated myoblasts.,domain:The beta domain, missing in a number of isoforms, is required for enhancement of transcriptional activity.,function:Transcriptional activator which binds specifically to the MEF2 element, 5'-YTA[AT](4)TAR-3', found in numerous muscle-specific, growth factor- and stress-induced genes. Mediates cellular functions not only in skeletal and cardiac muscle development, but also in neuronal differentiation and survival. Plays diverse roles in the control of cell growth, survival and apoptosis via p38 MAPK signaling in muscle-specific and/or growth factor-related transcription. Plays a critical role in the regulation of neuronal apoptosis.,PTM:Acetylated on Lys-439 by CREBBP. Deacetylated by SIRT1.,PTM:Phosphorylated on Ser-444 by CDK5 is required for Lys-439

**Nanjing BYabscience technology Co.,Ltd**



sumoylation and inhibits transcriptional activity.

## Background

This gene is a member of the myocyte-specific enhancer factor 2 (MEF2) family of transcription factors. Members of this family are involved in control of muscle and neuronal cell differentiation and development, and are regulated by class II histone deacetylases. Fusions of the encoded protein with Deleted in Azoospermia-Associated Protein 1 (DAZAP1) due to a translocation have been found in an acute lymphoblastic leukemia cell line, suggesting a role in leukemogenesis. The encoded protein may also be involved in Parkinson disease and myotonic dystrophy. Alternative splicing results in multiple transcript variants. [provided by RefSeq, Oct 2012],

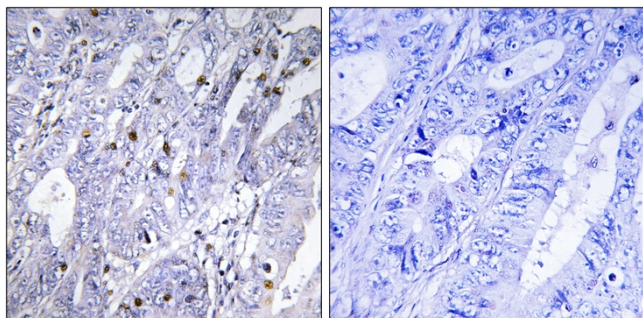
## matters needing attention

Avoid repeated freezing and thawing!

## Usage suggestions

This product can be used in immunological reaction related experiments. For more information, please consult technical personnel.

## Products Images



Immunohistochemistry analysis of paraffin-embedded human colon carcinoma tissue, using MEF2D Antibody. The picture on the right is blocked with the synthesized peptide.

**Nanjing BYabscience technology Co.,Ltd**

网址: [www.njbybio.com](http://www.njbybio.com)

官方热线: 025-5229-8998

监督电话: 15950492658