



HisRS Polyclonal Antibody

Catalog No	BYab-01778
Isotype	IgG
Reactivity	Human;Mouse
Applications	WB;IHC;IF;ELISA
Gene Name	HARS
Protein Name	Histidine--tRNA ligase cytoplasmic
Immunogen	The antiserum was produced against synthesized peptide derived from human HARS. AA range:460-509
Specificity	HisRS Polyclonal Antibody detects endogenous levels of HisRS protein.
Formulation	Liquid in PBS containing 50% glycerol, 0.5% BSA and 0.02% sodium azide.
Source	Polyclonal, Rabbit,IgG
Purification	The antibody was affinity-purified from rabbit antiserum by affinity-chromatography using epitope-specific immunogen.
Dilution	Western Blot: 1/500 - 1/2000. Immunohistochemistry: 1/100 - 1/300. Immunofluorescence: 1/200 - 1/1000. ELISA: 1/20000. Not yet tested in other applications.
Concentration	1 mg/ml
Purity	≥90%
Storage Stability	-20°C/1 year
Synonyms	HARS; HRS; Histidine--tRNA ligase; cytoplasmic; Histidyl-tRNA synthetase; HisRS
Observed Band	60kD
Cell Pathway	Cytoplasm .
Tissue Specificity	Brain, heart, liver and kidney.
Function	catalytic activity:ATP + L-histidine + tRNA(His) = AMP + diphosphate + L-histidyl-tRNA(His).,similarity:Belongs to the class-II aminoacyl-tRNA synthetase family.,similarity:Contains 1 WHEP-TRS domain.,tissue specificity:Brain, heart, liver and kidney.,
Background	Aminoacyl-tRNA synthetases are a class of enzymes that charge tRNAs with their cognate amino acids. The protein encoded by this gene is a cytoplasmic enzyme which belongs to the class II family of aminoacyl-tRNA synthetases. The enzyme is responsible for the synthesis of histidyl-transfer RNA, which is essential

Nanjing BYabscience technology Co.,Ltd



for the incorporation of histidine into proteins. The gene is located in a head-to-head orientation with HARSL on chromosome five, where the homologous genes share a bidirectional promoter. The gene product is a frequent target of autoantibodies in the human autoimmune disease polymyositis/dermatomyositis. Several transcript variants encoding different isoforms have been found for this gene. [provided by RefSeq, Apr 2012],

matters needing attention

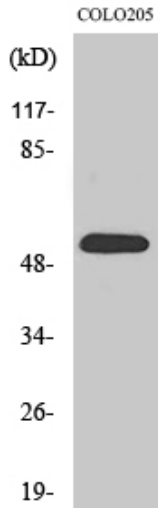
Avoid repeated freezing and thawing!

Usage suggestions

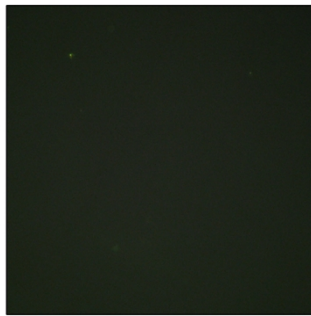
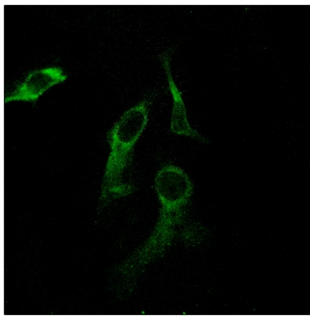
This product can be used in immunological reaction related experiments. For more information, please consult technical personnel.



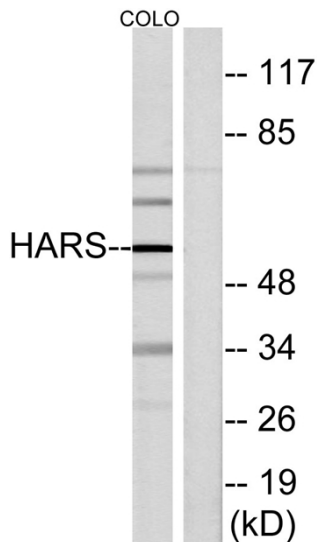
Products Images



Western Blot analysis of various cells using HisRS Polyclonal Antibody diluted at 1:2000



Immunofluorescence analysis of HepG2 and HeLa cells, using HARS Antibody. The picture on the right is blocked with the synthesized peptide.



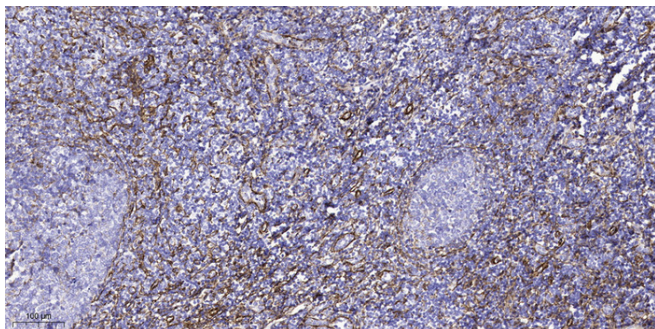
Western blot analysis of lysates from COLO cells, using HARS Antibody. The lane on the right is blocked with the synthesized peptide.

Nanjing BYabscience technology Co.,Ltd

网址: www.njbybio.com

官方热线: 025-5229-8998

监督电话: 15950492658



Immunohistochemical analysis of paraffin-embedded human tonsil. 1, Tris-EDTA, pH 9.0 was used for antigen retrieval. 2 Antibody was diluted at 1:200 (4° overnight). 3, Secondary antibody was diluted at 1:200 (room temperature, 45 min).