



hCAP-G2 Polyclonal Antibody

Catalog No	BYab-01757
Isotype	IgG
Reactivity	Human;Rat;Mouse;
Applications	WB;IHC;IF;ELISA
Gene Name	NCAPG2
Protein Name	Condensin-2 complex subunit G2
Immunogen	The antiserum was produced against synthesized peptide derived from human NCAPG2. AA range:561-610
Specificity	hCAP-G2 Polyclonal Antibody detects endogenous levels of hCAP-G2 protein.
Formulation	Liquid in PBS containing 50% glycerol, 0.5% BSA and 0.02% sodium azide.
Source	Polyclonal, Rabbit,IgG
Purification	The antibody was affinity-purified from rabbit antiserum by affinity-chromatography using epitope-specific immunogen.
Dilution	IHC: 1/100 - 1/300. ELISA: 1/40000.. IF 1:50-200
Concentration	1 mg/ml
Purity	≥90%
Storage Stability	-20°C/1 year
Synonyms	NCAPG2; LUZP5; Condensin-2 complex subunit G2; Chromosome-associated protein G2; CAP-G2; hCAP-G2; Leucine zipper protein 5; Non-SMC condensin II complex subunit G2
Observed Band	
Cell Pathway	Nucleus .
Tissue Specificity	Endometrium,Epithelium,Ovary,Testis,
Function	function:Regulatory subunit of the condensin-2 complex, a complex which establishes mitotic chromosome architecture and is involved in physical rigidity of the chromatid axis.,similarity:Contains 1 HEAT repeat.,subunit:Component of the condensin-2 complex, which contains the SMC2 and SMC4 heterodimer, and 3 non SMC subunits that probably regulate the complex: NCAPH2, NCAPD3 and NCAPG2.,
Background	non-SMC condensin II complex subunit G2(NCAPG2) Homo sapiens This gene encodes a protein that belongs to the Condensin2nSMC family of proteins.

Nanjing BYabscience technology Co.,Ltd



The encoded protein is a regulatory subunit of the condensin II complex which, along with the condensin I complex, plays a role in chromosome assembly and segregation during mitosis. A similar protein in mouse is required for early development of the embryo. Alternate splicing results in multiple transcript variants. [provided by RefSeq, Aug 2013],

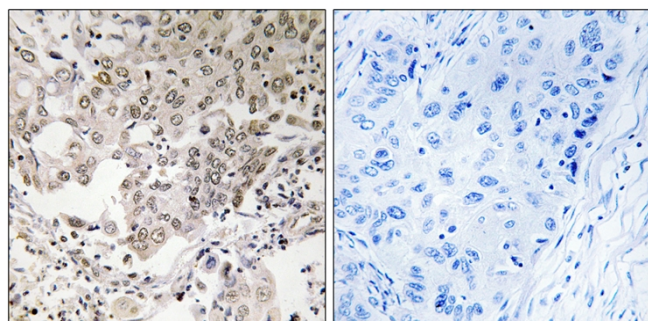
matters needing attention

Avoid repeated freezing and thawing!

Usage suggestions

This product can be used in immunological reaction related experiments. For more information, please consult technical personnel.

Products Images



Immunohistochemistry analysis of paraffin-embedded human lung carcinoma, using NCAPG2 Antibody. The picture on the right is blocked with the synthesized peptide.