



FoxN2 Polyclonal Antibody

Catalog No	BYab-01730
Isotype	IgG
Reactivity	Human;Rat;Mouse;
Applications	WB;IHC;IF;ELISA
Gene Name	FOXN2
Protein Name	Forkhead box protein N2
Immunogen	The antiserum was produced against synthesized peptide derived from human FOXN2. AA range:341-390
Specificity	FoxN2 Polyclonal Antibody detects endogenous levels of FoxN2 protein.
Formulation	Liquid in PBS containing 50% glycerol, 0.5% BSA and 0.02% sodium azide.
Source	Polyclonal, Rabbit,IgG
Purification	The antibody was affinity-purified from rabbit antiserum by affinity-chromatography using epitope-specific immunogen.
Dilution	WB: 1/500 - 1/2000. IHC: 1/100 - 1/300. ELISA: 1/20000.. IF 1:50-200
Concentration	1 mg/ml
Purity	≥90%
Storage Stability	-20°C/1 year
Synonyms	FOXN2; HTLF; Forkhead box protein N2; Human T-cell leukemia virus enhancer factor
Observed Band	36kD
Cell Pathway	Nucleus.
Tissue Specificity	PCR rescued clones,Placenta,
Function	function:Binds to the purine-rich region in HTLV-I LTR.,similarity:Contains 1 fork-head DNA-binding domain.,
Background	This gene encodes a forkhead domain binding protein and may function in the transcriptional regulation of the human T-cell leukemia virus long terminal repeat. [provided by RefSeq, Jul 2008],
matters needing attention	Avoid repeated freezing and thawing!

Nanjing BYabscience technology Co.,Ltd

网址: www.njbybio.com

官方热线: 025-5229-8998

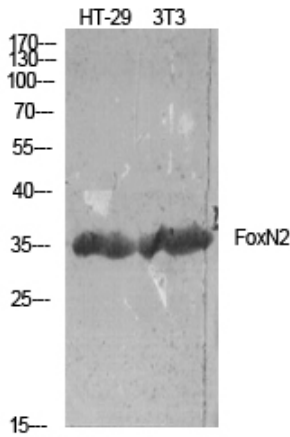
监督电话: 15950492658



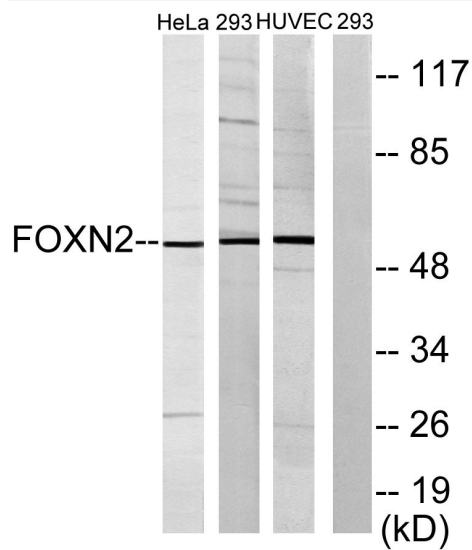
Usage suggestions

This product can be used in immunological reaction related experiments. For more information, please consult technical personnel.

Products Images



Western Blot analysis of HT-29/NIH-3T3 using FoxN2 Polyclonal Antibody.



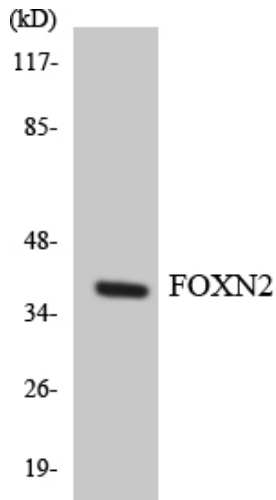
Western blot analysis of lysates from HeLa, 293, and HUVEC cells, using FOXN2 Antibody. The lane on the right is blocked with the synthesized peptide.

Nanjing BYabscience technology Co.,Ltd

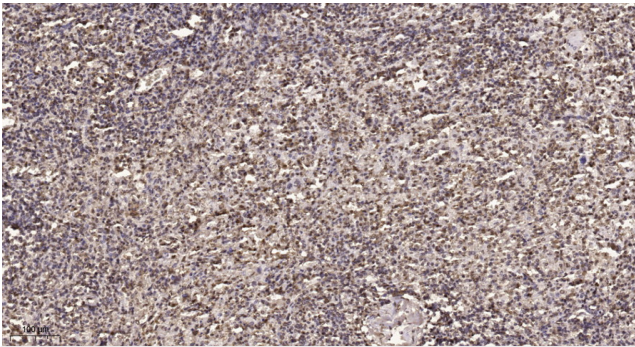
网址: www.njbybio.com

官方热线: 025-5229-8998

监督电话: 15950492658



Western blot analysis of the lysates from K562 cells using FOXN2 antibody.



Immunohistochemical analysis of paraffin-embedded human spleen. 1, Tris-EDTA, pH9.0 was used for antigen retrieval. 2 Antibody was diluted at 1:200 (4° overnight). 3, Secondary antibody was diluted at 1:200 (room temperature, 45min).