



EKLF/CKLF/UKLF Polyclonal Antibody

Catalog No	BYab-01688
Isotype	IgG
Reactivity	Human;Mouse;Rat
Applications	WB;IF;ELISA
Gene Name	KLF1/KLF5/KLF7
Protein Name	Krueppel-like factor 1/Krueppel-like factor 5/Krueppel-like factor 7
Immunogen	The antiserum was produced against synthesized peptide derived from human KLF. AA range:291-340
Specificity	EKLF/CKLF/UKLF Polyclonal Antibody detects endogenous levels of EKLF/CKLF/UKLF protein.
Formulation	Liquid in PBS containing 50% glycerol, 0.5% BSA and 0.02% sodium azide.
Source	Polyclonal, Rabbit,IgG
Purification	The antibody was affinity-purified from rabbit antiserum by affinity-chromatography using epitope-specific immunogen.
Dilution	Western Blot: 1/500 - 1/2000. Immunofluorescence: 1/200 - 1/1000. ELISA: 1/20000. Not yet tested in other applications.
Concentration	1 mg/ml
Purity	≥90%
Storage Stability	-20°C/1 year
Synonyms	KLF1; EKLF; Krueppel-like factor 1; Erythroid krueppel-like transcription factor; EKLF; KLF5; BTEB2; CKLF; IKLF; Krueppel-like factor 5; Basic transcription element-binding protein 2; BTE-binding protein 2; Colon krueppel-like factor; GC-bo
Observed Band	38kD(EKLF) 20kD(CKLF/UKLF)
Cell Pathway	Nucleus . Colocalizes with SUMO1 in nuclear speckles. .
Tissue Specificity	Expression restricted to adult bone marrow and fetal liver. Not expressed in myeloid nor lymphoid cell lines.
Function	function:Transcription regulator of erythrocyte development. Binds to the CACCC box in the beta-globin gene promoter and activates transcription. When sumoylation, acts as a Probably serves as a general switch factor for erythroid development. When sumoylated, acts as a transcriptional repressor, by promoting interaction with CDH2/Mi2beta and also represses megakaryocytic differentiation.,PTM:Acetylated; can be acetylated on both Lys-274 and Lys-288. Acetylation on Lys-274 (by CBP) appears to be the major site affecting EKLF

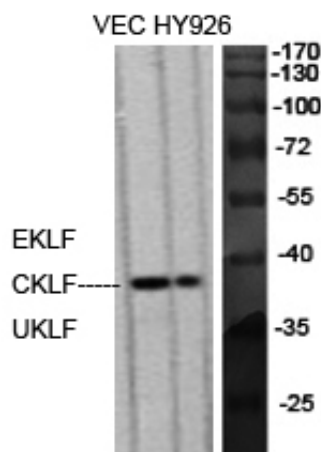
Nanjing BYabscience technology Co.,Ltd



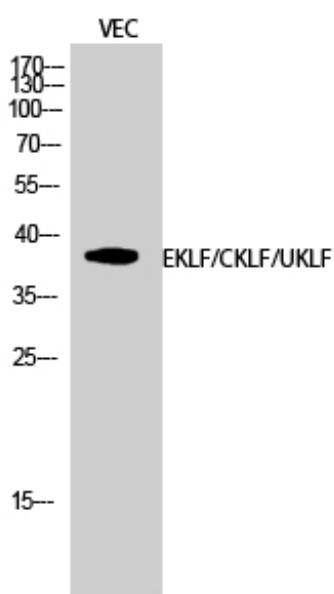
	transactivation activity.,PTM:Phosphorylated primarily on serine residues in the transactivation domain. Phosphorylation on Thr-23 is critical for the transactivation activity.,PTM:Sumoylated; sumoylation, promoted by PIAS1, leads to repression of megakaryocyte differentiation. Also promotes the interaction with the CDH4 subunit of the NuRD repression complex.,simila
Background	This gene encodes a hematopoietic-specific transcription factor that induces high-level expression of adult beta-globin and other erythroid genes. The zinc-finger protein binds to the DNA sequence CCACACCCT found in the beta hemoglobin promoter. Heterozygous loss-of-function mutations in this gene result in the dominant In(Lu) blood phenotype. [provided by RefSeq, Oct 2009],
matters needing attention	Avoid repeated freezing and thawing!
Usage suggestions	This product can be used in immunological reaction related experiments. For more information, please consult technical personnel.



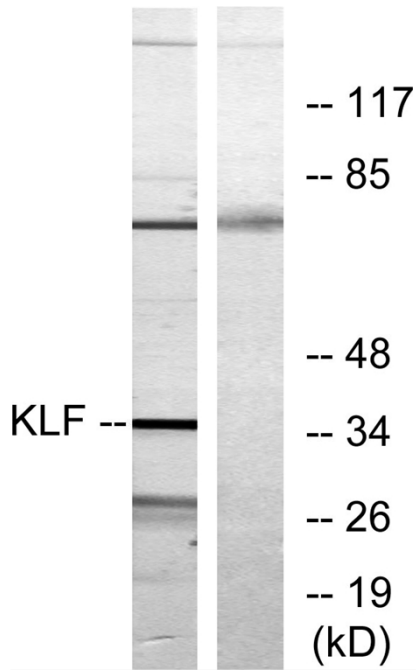
Products Images



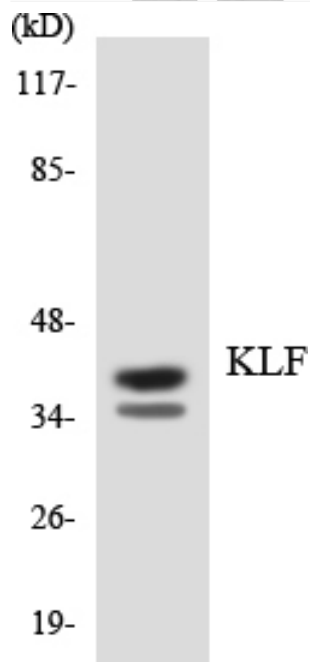
Western Blot analysis of various cells using EKLF/CKLF/UKLF Polyclonal Antibody diluted at 1:500 cells nucleus extracted by Minute TM Cytoplasmic and Nuclear Fractionation kit (SC-003, Inventbiotech, MN, USA).



Western Blot analysis of VEC cells using EKLF/CKLF/UKLF Polyclonal Antibody diluted at 1:500 cells nucleus extracted by Minute TM Cytoplasmic and Nuclear Fractionation kit (SC-003, Inventbiotech, MN, USA).



Western blot analysis of lysates from Jurkat cells, treated with serum 20% 15', using KLF Antibody. The lane on the right is blocked with the synthesized peptide.



Western blot analysis of the lysates from K562 cells using KLF antibody.