



EF-1 γ Polyclonal Antibody

Catalog No	BYab-01680
Isotype	IgG
Reactivity	Human;Mouse;Rat
Applications	WB;ELISA
Gene Name	EEF1G
Protein Name	Elongation factor 1-gamma
Immunogen	The antiserum was produced against synthesized peptide derived from human EEF1G. AA range:101-150
Specificity	EF-1 γ Polyclonal Antibody detects endogenous levels of EF-1 γ protein.
Formulation	Liquid in PBS containing 50% glycerol, 0.5% BSA and 0.02% sodium azide.
Source	Polyclonal, Rabbit,IgG
Purification	The antibody was affinity-purified from rabbit antiserum by affinity-chromatography using epitope-specific immunogen.
Dilution	Western Blot: 1/500 - 1/2000. ELISA: 1/20000. Not yet tested in other applications.
Concentration	1 mg/ml
Purity	$\geq 90\%$
Storage Stability	-20°C/1 year
Synonyms	EEF1G; EF1G; Elongation factor 1-gamma; EF-1-gamma; eEF-1B gamma
Observed Band	55kD
Cell Pathway	nucleus,cytoplasm,endoplasmic reticulum,cytosol,cell-cell adherens junction,membrane,extracellular exosome,
Tissue Specificity	Highly expressed in pancreatic tumor tissue and to a lesser extent in normal kidney, intestine, pancreas, stomach, lung, brain, spleen and liver.
Function	function:Probably plays a role in anchoring the complex to other cellular components.,similarity:Contains 1 EF-1-gamma C-terminal domain.,similarity:Contains 1 GST C-terminal domain.,similarity:Contains 1 GST N-terminal domain.,subunit:EF-1 is composed of four subunits: alpha, beta, delta, and gamma.,tissue specificity:Highly expressed in pancreatic tumor tissue and to a lesser extent in normal kidney, intestine, pancreas, stomach, lung, brain, spleen and liver.,
Background	eukaryotic translation elongation factor 1 gamma(EEF1G) Homo sapiens This gene encodes a subunit of the elongation factor-1 complex, which is responsible for the enzymatic delivery of aminoacyl tRNAs to the ribosome. This subunit

Nanjing BYabscience technology Co.,Ltd



contains an N-terminal glutathione transferase domain, which may be involved in regulating the assembly of multisubunit complexes containing this elongation factor and aminoacyl-tRNA synthetases. [provided by RefSeq, Jul 2008],

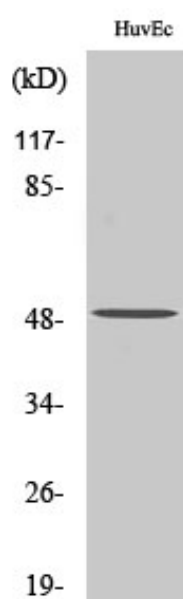
matters needing attention

Avoid repeated freezing and thawing!

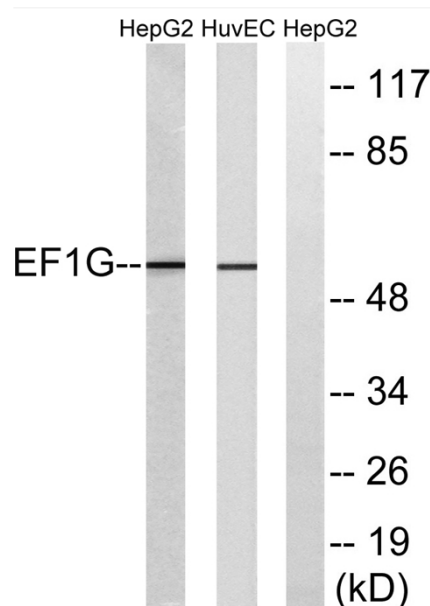
Usage suggestions

This product can be used in immunological reaction related experiments. For more information, please consult technical personnel.

Products Images

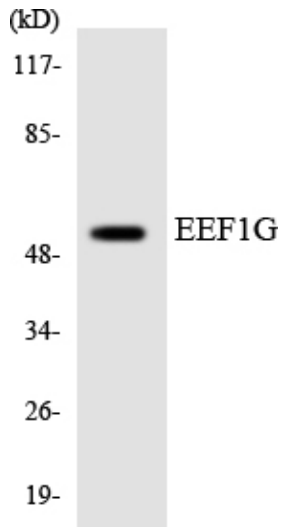


Western Blot analysis of various cells using EF-1 γ Polyclonal Antibody diluted at 1:1000



Western blot analysis of lysates from HUVEC and HepG2 cells, using EF1G Antibody. The lane on the right is blocked with the synthesized peptide.

Nanjing BYabs science technology Co.,Ltd



Western blot analysis of the lysates from HepG2 cells using EEF1G antibody.