



DDX51 Polyclonal Antibody

Catalog No	BYab-01644
Isotype	IgG
Reactivity	Human;Rat;Mouse;
Applications	WB;IHC;IF;ELISA
Gene Name	DDX51
Protein Name	ATP-dependent RNA helicase DDX51
Immunogen	The antiserum was produced against synthesized peptide derived from human DDX51. AA range:617-666
Specificity	DDX51 Polyclonal Antibody detects endogenous levels of DDX51 protein.
Formulation	Liquid in PBS containing 50% glycerol, 0.5% BSA and 0.02% sodium azide.
Source	Polyclonal, Rabbit,IgG
Purification	The antibody was affinity-purified from rabbit antiserum by affinity-chromatography using epitope-specific immunogen.
Dilution	WB: 1/500 - 1/2000. IHC: 1/100 - 1/300. ELISA: 1/40000.. IF 1:50-200
Concentration	1 mg/ml
Purity	≥90%
Storage Stability	-20°C/1 year
Synonyms	DDX51; ATP-dependent RNA helicase DDX51; DEAD box protein 51
Observed Band	72kD
Cell Pathway	Nucleus, nucleolus .
Tissue Specificity	Brain,Epithelium,Retina,Small intestine,Urinary bladder,
Function	domain:The Q motif is unique to and characteristic of the DEAD box family of RNA helicases and controls ATP binding and hydrolysis.,function:ATP-binding RNA helicase involved in the biogenesis of 60S ribosomal subunits.,similarity:Belongs to the DEAD box helicase family. DDX51/DBP6 subfamily.,similarity:Contains 1 helicase ATP-binding domain.,similarity:Contains 1 helicase C-terminal domain.,
Background	domain:The Q motif is unique to and characteristic of the DEAD box family of RNA helicases and controls ATP binding and hydrolysis.,function:ATP-binding RNA helicase involved in the biogenesis of 60S ribosomal subunits.,similarity:Belongs to the DEAD box helicase family. DDX51/DBP6 subfamily.,similarity:Contains 1 helicase ATP-binding domain.,similarity:Contains 1 helicase C-terminal domain.,

Nanjing BYabs science technology Co.,Ltd



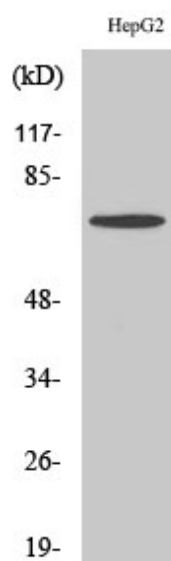
matters needing attention

Avoid repeated freezing and thawing!

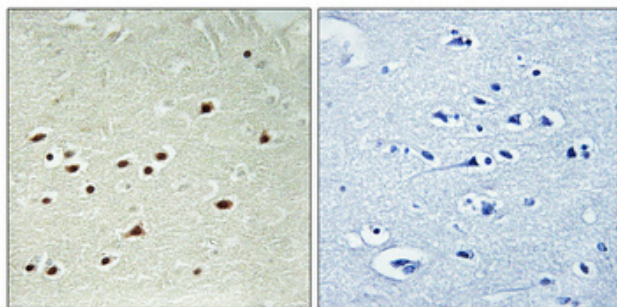
Usage suggestions

This product can be used in immunological reaction related experiments. For more information, please consult technical personnel.

Products Images

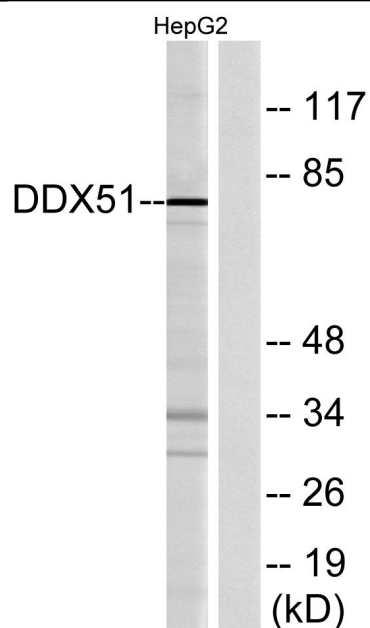


Western Blot analysis of various cells using DDX51 Polyclonal Antibody cells nucleus extracted by Minute TM Cytoplasmic and Nuclear Fractionation kit (SC-003, Invent biotech, MN, USA).

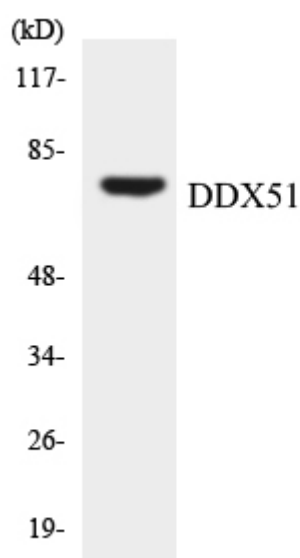


Immunohistochemical analysis of paraffin-embedded Human brain. Antibody was diluted at 1:100 (4° overnight). High-pressure and temperature Tris-EDTA, pH 8.0 was used for antigen retrieval. Negative control (right) obtained from antibody was pre-absorbed by immunogen peptide.

Nanjing BYabscience technology Co., Ltd



Western blot analysis of lysates from HepG2 cells, using DDX51 Antibody. The lane on the right is blocked with the synthesized peptide.



Western blot analysis of the lysates from K562 cells using DDX51 antibody.