



CstF-64T Polyclonal Antibody

Catalog No	BYab-01632
Isotype	IgG
Reactivity	Human;Mouse;Rat
Applications	WB;IHC;IF;ELISA
Gene Name	CSTF2T
Protein Name	Cleavage stimulation factor subunit 2 tau variant
Immunogen	The antiserum was produced against synthesized peptide derived from human CSTF2T. AA range:91-140
Specificity	CstF-64T Polyclonal Antibody detects endogenous levels of CstF-64T protein.
Formulation	Liquid in PBS containing 50% glycerol, 0.5% BSA and 0.02% sodium azide.
Source	Polyclonal, Rabbit,IgG
Purification	The antibody was affinity-purified from rabbit antiserum by affinity-chromatography using epitope-specific immunogen.
Dilution	WB: 1/500 - 1/2000. IHC: 1/100 - 1/300. ELISA: 1/40000.. IF 1:50-200
Concentration	1 mg/ml
Purity	≥90%
Storage Stability	-20°C/1 year
Synonyms	CSTF2T; KIAA0689; Cleavage stimulation factor subunit 2 tau variant; CF-1 64 kDa subunit tau variant; Cleavage stimulation factor 64 kDa subunit tau variant; CSTF 64 kDa subunit tau variant; TauCstF-64
Observed Band	64kD
Cell Pathway	Nucleus .
Tissue Specificity	Brain,Coronary artery,Epithelium,Testis,
Function	function:May play a significant role in AAUAAA-independent mRNA polyadenylation in germ cells. Directly involved in the binding to pre-mRNAs.,PTM:Phosphorylated upon DNA damage, probably by ATM or ATR.,similarity:Contains 1 RRM (RNA recognition motif) domain.,
Background	function:May play a significant role in AAUAAA-independent mRNA polyadenylation in germ cells. Directly involved in the binding to pre-mRNAs.,PTM:Phosphorylated upon DNA damage, probably by ATM or ATR.,similarity:Contains 1 RRM (RNA recognition motif) domain.,

Nanjing BYabscience technology Co.,Ltd



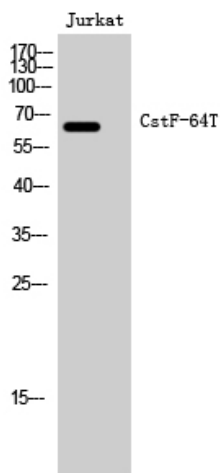
matters needing attention

Avoid repeated freezing and thawing!

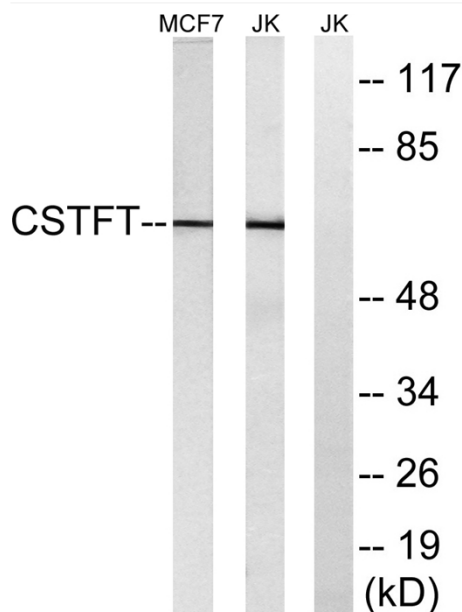
Usage suggestions

This product can be used in immunological reaction related experiments. For more information, please consult technical personnel.

Products Images



Western Blot analysis of Jurkat cells using CstF-64T Polyclonal Antibody cells nucleus extracted by Minute TM Cytoplasmic and Nuclear Fractionation kit (SC-003, Inventbiotech, MN, USA).



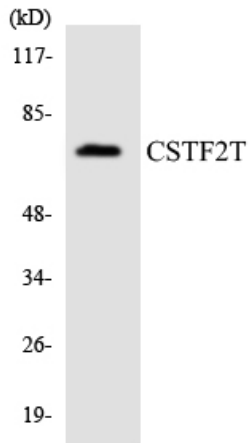
Western blot analysis of lysates from Jurkat and MCF-7 cells, using CSTF2T Antibody. The lane on the right is blocked with the synthesized peptide.

Nanjing BYabscience technology Co.,Ltd

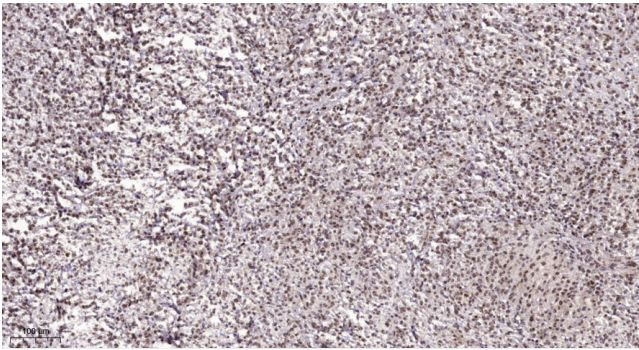
网址: www.njbybio.com

官方热线: 025-5229-8998

监督电话: 15950492658



Western blot analysis of the lysates from Jurkat cells using CSTF2T antibody.



Immunohistochemical analysis of paraffin-embedded human Colon cancer. 1, Antibody was diluted at 1:200(4° overnight). 2, Tris-EDTA,pH9.0 was used for antigen retrieval. 3,Secondary antibody was diluted at 1:200(room temperature, 45min).