



# CREM Polyclonal Antibody

<b>Catalog No</b>	BYab-01622
<b>Isotype</b>	IgG
<b>Reactivity</b>	Human;Mouse;Rat
<b>Applications</b>	WB;IHC;IF;ELISA
<b>Gene Name</b>	CREM
<b>Protein Name</b>	cAMP-responsive element modulator
<b>Immunogen</b>	The antiserum was produced against synthesized peptide derived from human CREM. AA range:81-130
<b>Specificity</b>	CREM Polyclonal Antibody detects endogenous levels of CREM protein.
<b>Formulation</b>	Liquid in PBS containing 50% glycerol, 0.5% BSA and 0.02% sodium azide.
<b>Source</b>	Polyclonal, Rabbit,IgG
<b>Purification</b>	The antibody was affinity-purified from rabbit antiserum by affinity-chromatography using epitope-specific immunogen.
<b>Dilution</b>	WB: 1/500 - 1/2000. IHC: 1/100 - 1/300. ELISA: 1/20000.. IF 1:50-200
<b>Concentration</b>	1 mg/ml
<b>Purity</b>	≥90%
<b>Storage Stability</b>	-20°C/1 year
<b>Synonyms</b>	CREM; cAMP-responsive element modulator; Inducible cAMP early repressor; ICER
<b>Observed Band</b>	34kD
<b>Cell Pathway</b>	Nucleus.; [Isoform 6]: Cytoplasm . Nucleus .
<b>Tissue Specificity</b>	Expressed in testes (round spermatids) (at protein level). Isoform 14 is the major activator form in testes.
<b>Function</b>	caution:The sequence shown here is derived from an Ensembl automatic analysis pipeline and should be considered as preliminary data.,function:Transcriptional regulator that binds the cAMP response element (CRE), a sequence present in many viral and cellular promoters. Isoforms are either transcriptional activators or repressors. Plays a role in spermatogenesis and is involved in spermatid maturation.,PTM:Stimulated by phosphorylation.,sequence caution:Translated as Tyr.,similarity:Belongs to the bZIP family.,similarity:Contains 1 bZIP domain.,similarity:Contains 1 KID (kinase-inducible) domain.,subunit:Binds DNA as a dimer. Interacts with FHL5.,tissue specificity:Expressed in testes (round spermatids) (at protein level). Isoform 14 is the major activator form in testes.,

**Nanjing BYabscience technology Co.,Ltd**

**Background**

cAMP responsive element modulator(CREM) Homo sapiens This gene encodes a bZIP transcription factor that binds to the cAMP responsive element found in many viral and cellular promoters. It is an important component of cAMP-mediated signal transduction during the spermatogenic cycle, as well as other complex processes. Alternative promoter and translation initiation site usage allows this gene to exert spatial and temporal specificity to cAMP responsiveness. Multiple alternatively spliced transcript variants encoding several different isoforms have been found for this gene, with some of them functioning as activators and some as repressors of transcription. [provided by RefSeq, Jul 2008],

**matters needing attention**

Avoid repeated freezing and thawing!

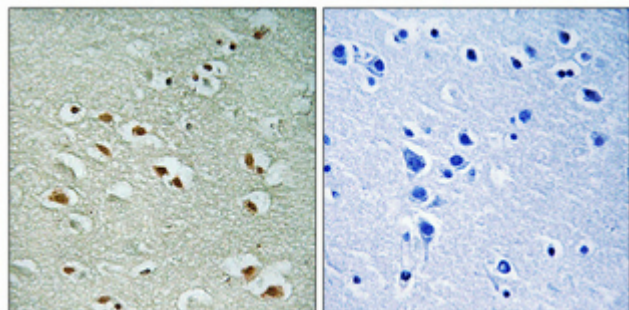
**Usage suggestions**

This product can be used in immunological reaction related experiments. For more information, please consult technical personnel.

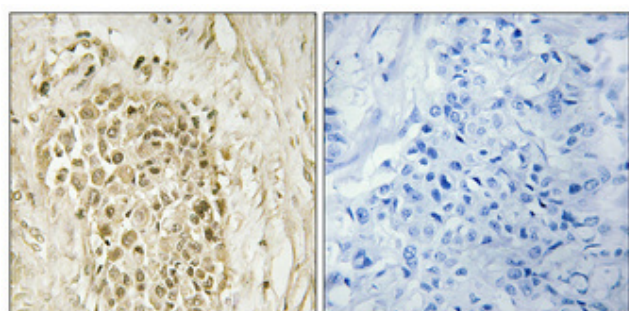
Nanjing BYabscience technology Co.,Ltd



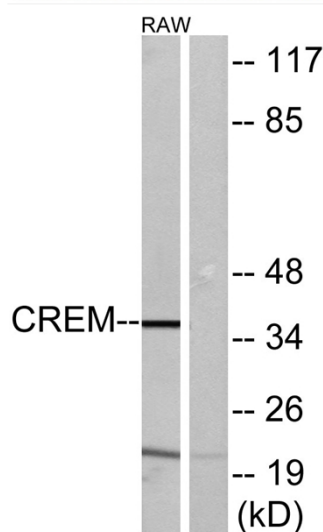
## Products Images



Immunohistochemical analysis of paraffin-embedded Human brain. Antibody was diluted at 1:100(4° overnight). High-pressure and temperature Tris-EDTA,pH8.0 was used for antigen retrieval. Negative contrl (right) obtained from antibody was pre-absorbed by immunogen peptide.



Immunohistochemical analysis of paraffin-embedded Human breast cancer. Antibody was diluted at 1:100(4° overnight). High-pressure and temperature Tris-EDTA,pH8.0 was used for antigen retrieval. Negative contrl (right) obtained from antibody was pre-absorbed by immunogen peptide.



Western blot analysis of lysates from RAW264.7 cells, using CREM Antibody. The lane on the right is blocked with the synthesized peptide.