



# CREB3L2 Polyclonal Antibody

<b>Catalog No</b>	BYab-01620
<b>Isotype</b>	IgG
<b>Reactivity</b>	Human;Mouse;Rat
<b>Applications</b>	WB;ELISA
<b>Gene Name</b>	CREB3L2
<b>Protein Name</b>	Cyclic AMP-responsive element-binding protein 3-like protein 2
<b>Immunogen</b>	The antiserum was produced against synthesized peptide derived from human CREB3L2. AA range:269-318
<b>Specificity</b>	CREB3L2 Polyclonal Antibody detects endogenous levels of CREB3L2 protein.
<b>Formulation</b>	Liquid in PBS containing 50% glycerol, 0.5% BSA and 0.02% sodium azide.
<b>Source</b>	Polyclonal, Rabbit,IgG
<b>Purification</b>	The antibody was affinity-purified from rabbit antiserum by affinity-chromatography using epitope-specific immunogen.
<b>Dilution</b>	Western Blot: 1/500 - 1/2000. ELISA: 1/10000. Not yet tested in other applications.
<b>Concentration</b>	1 mg/ml
<b>Purity</b>	≥90%
<b>Storage Stability</b>	-20°C/1 year
<b>Synonyms</b>	CREB3L2; BBF2H7; Cyclic AMP-responsive element-binding protein 3-like protein 2; cAMP-responsive element-binding protein 3-like protein 2; BBF2 human homolog on chromosome 7
<b>Observed Band</b>	58kD
<b>Cell Pathway</b>	Endoplasmic reticulum membrane ; Single-pass type II membrane protein. ER membrane resident protein. Upon ER stress, translocated to the Golgi apparatus where it is cleaved. The cytosolic N-terminal fragment (processed cyclic AMP-responsive element-binding protein 3-like protein 1) is transported into the nucleus. .; [Processed cyclic AMP-responsive element-binding protein 3-like protein 2]: Nucleus. Upon ER stress, translocated into the nucleus. .
<b>Tissue Specificity</b>	Widely expressed with highest levels in placenta, lung, spleen and intestine, and lowest levels in heart, brain, skeletal muscle, thymus, colon and leukocytes. In fetal tissues, the weakest expression is detected in brain and heart.
<b>Function</b>	disease:A chromosomal rearrangement involving CREB3L2 is found in low grade fibromyxoid sarcoma (LGFMS). Translocation t(7;16)(q33;p11) with FUS.,function:Transcriptional activator that may act during endoplasmic reticulum

**Nanjing BYabs science technology Co.,Ltd**



stress late phase by activating unfolded protein response target genes. May play a role in preventing accumulation of unfolded proteins in damaged neurons. In vitro, binds to the cAMP response element (CRE) and activates transcription through CRE.,PTM:Controlled by regulated intramembrane proteolysis (RIP). Following ER stress a fragment containing the cytoplasmic transcription factor domain is released by proteolysis. The cleavage seems to be performed sequentially by site-1 and site-2 proteases (PS1 and PS2).,similarity:Belongs to the bZIP family.,similarity:Belongs to the bZIP family. ATF subfamily.,similarity:Contains 1 bZIP domain.,subcellular location:Under ER st

**Background**

This gene encodes a member of the oasis bZIP transcription factor family. Members of this family can dimerize but form homodimers only. The encoded protein is a transcriptional activator. Translocations between this gene on chromosome 7 and the gene fused in sarcoma on chromosome 16 can be found in some tumors. Multiple transcript variants encoding different isoforms have been found for this gene. [provided by RefSeq, Dec 2011],

**matters needing attention**

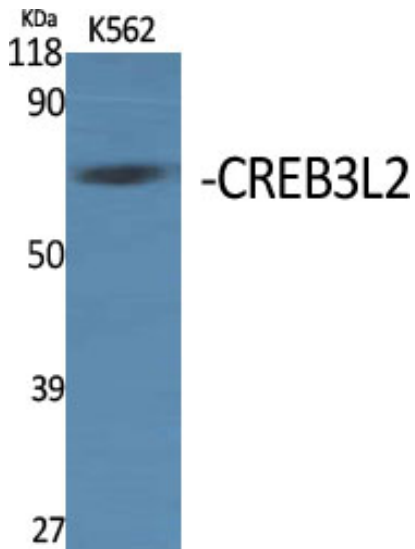
Avoid repeated freezing and thawing!

**Usage suggestions**

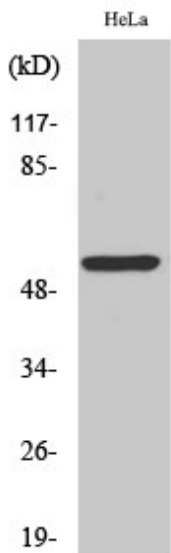
This product can be used in immunological reaction related experiments. For more information, please consult technical personnel.



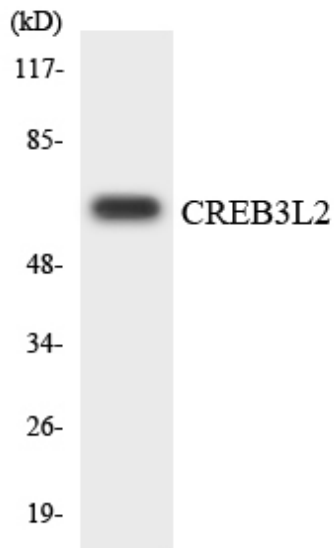
## Products Images



Western Blot analysis of various cells using CREB3L2 Polyclonal Antibody



Western Blot analysis of HeLa cells using CREB3L2 Polyclonal Antibody



Western blot analysis of the lysates from 293 cells  
using CREB3L2 antibody.