



CGI-43 Polyclonal Antibody

Catalog No	BYab-01608
Isotype	IgG
Reactivity	Human;Mouse;Monkey
Applications	WB;ELISA
Gene Name	CCZ1/C7orf28B
Protein Name	Vacuolar fusion protein CCZ1 homolog/Vacuolar fusion protein CCZ1 homolog-like
Immunogen	The antiserum was produced against synthesized peptide derived from human CG028. AA range:411-460
Specificity	CGI-43 Polyclonal Antibody detects endogenous levels of CGI-43 protein.
Formulation	Liquid in PBS containing 50% glycerol, 0.5% BSA and 0.02% sodium azide.
Source	Polyclonal, Rabbit,IgG
Purification	The antibody was affinity-purified from rabbit antiserum by affinity-chromatography using epitope-specific immunogen.
Dilution	Western Blot: 1/500 - 1/2000. ELISA: 1/10000. Not yet tested in other applications.
Concentration	1 mg/ml
Purity	≥90%
Storage Stability	-20°C/1 year
Synonyms	CCZ1; C7orf28A; CGI-43; Vacuolar fusion protein CCZ1 homolog; CCZ1B; C7orf28B; Vacuolar fusion protein CCZ1 homolog B; Vacuolar fusion protein CCZ1 homolog-like
Observed Band	56kD
Cell Pathway	Lysosome membrane .
Tissue Specificity	Brain,Skin,Testis,Uterus,
Function	similarity:Belongs to the UPF0550 family.,
Background	similarity:Belongs to the UPF0550 family.,
matters needing attention	Avoid repeated freezing and thawing!

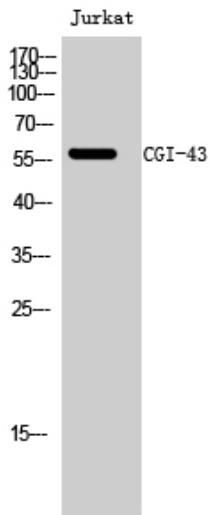
Nanjing BYabscience technology Co.,Ltd



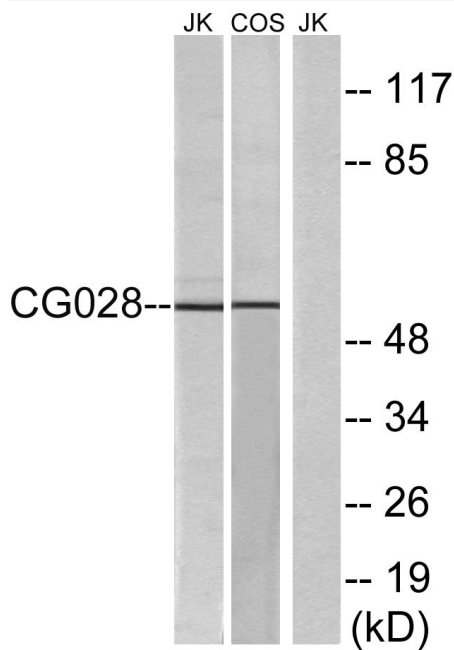
Usage suggestions

This product can be used in immunological reaction related experiments. For more information, please consult technical personnel.

Products Images



Western Blot analysis of Jurkat cells using CGI-43 Polyclonal Antibody diluted at 1:500



Western blot analysis of lysates from Jurkat and COS cells, using CG028 Antibody. The lane on the right is blocked with the synthesized peptide.

Nanjing BYabs science technology Co.,Ltd

网址: www.njbybio.com

官方热线: 025-5229-8998

监督电话: 15950492658