



C16orf44 Polyclonal Antibody

Catalog No	BYab-01585
Isotype	IgG
Reactivity	Human;Rat;Mouse;
Applications	IHC;IF;ELISA
Gene Name	KLHL36
Protein Name	Kelch-like protein 36
Immunogen	The antiserum was produced against synthesized peptide derived from human C16orf44. AA range:567-616
Specificity	C16orf44 Polyclonal Antibody detects endogenous levels of C16orf44 protein.
Formulation	Liquid in PBS containing 50% glycerol, 0.5% BSA and 0.02% sodium azide.
Source	Polyclonal, Rabbit,IgG
Purification	The antibody was affinity-purified from rabbit antiserum by affinity-chromatography using epitope-specific immunogen.
Dilution	IHC: 1/100 - 1/300. ELISA: 1/40000.. IF 1:50-200
Concentration	1 mg/ml
Purity	≥90%
Storage Stability	-20°C/1 year
Synonyms	KLHL36; C16orf44; Kelch-like protein 36
Observed Band	
Cell Pathway	Cul3-RING ubiquitin ligase complex,
Tissue Specificity	Blood,Spleen,
Function	function:Probable substrate-specific adapter of an E3 ubiquitin-protein ligase complex which mediates the ubiquitination and subsequent proteasomal degradation of target proteins.,pathway:Protein modification; protein ubiquitination.,similarity:Contains 1 BACK (BTB/Kelch associated) domain.,similarity:Contains 1 BTB (POZ) domain.,similarity:Contains 6 Kelch repeats.,subunit:Interacts with cul3.,
Background	function:Probable substrate-specific adapter of an E3 ubiquitin-protein ligase complex which mediates the ubiquitination and subsequent proteasomal degradation of target proteins.,pathway:Protein modification; protein ubiquitination.,similarity:Contains 1 BACK (BTB/Kelch associated)

Nanjing BYabscience technology Co.,Ltd



domain.,similarity:Contains 1 BTB (POZ) domain.,similarity:Contains 6 Kelch repeats.,subunit:Interacts with cul3.,

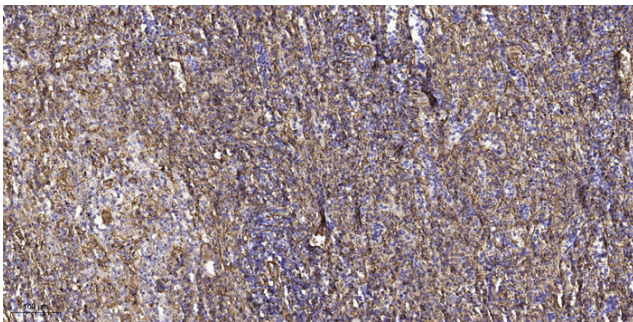
matters needing attention

Avoid repeated freezing and thawing!

Usage suggestions

This product can be used in immunological reaction related experiments. For more information, please consult technical personnel.

Products Images



Immunohistochemical analysis of paraffin-embedded human spleen tissue. 1,primary Antibody was diluted at 1:200(4° overnight). 2, Sodium citrate pH 6.0 was used for antigen retrieval(>98°C,20min). 3,Secondary antibody was diluted at 1:200

Nanjing BYabscience technology Co.,Ltd

网址: www.njbybio.com

官方热线: 025-5229-8998

监督电话: 15950492658