



BS69 Polyclonal Antibody

Catalog No	BYab-01575
Isotype	IgG
Reactivity	Human;Mouse;Rat
Applications	IHC;IF;ELISA
Gene Name	ZMYND11
Protein Name	Zinc finger MYND domain-containing protein 11
Immunogen	The antiserum was produced against synthesized peptide derived from human ZMY11. AA range:111-160
Specificity	BS69 Polyclonal Antibody detects endogenous levels of BS69 protein.
Formulation	Liquid in PBS containing 50% glycerol, 0.5% BSA and 0.02% sodium azide.
Source	Polyclonal, Rabbit,IgG
Purification	The antibody was affinity-purified from rabbit antiserum by affinity-chromatography using epitope-specific immunogen.
Dilution	IHC: 1/100 - 1/300. ELISA: 1/20000.. IF 1:50-200
Concentration	1 mg/ml
Purity	≥90%
Storage Stability	-20°C/1 year
Synonyms	ZMYND11; BS69; Zinc finger MYND domain-containing protein 11; Adenovirus 5 E1A-binding protein; Protein BS69
Observed Band	
Cell Pathway	Nucleus . Chromosome . Associates with chromatin and mitotic chromosomes. .
Tissue Specificity	Ubiquitous.
Function	function:Binds to the transactivation domain of the adenovirus type 5 E1A 32 kDa protein (289R) and inhibits its transactivating activity. May act as tumor suppressor through suppression of adenovirus replication.,PTM:Phosphorylated upon DNA damage, probably by ATM or ATR.,similarity:Contains 1 bromo domain.,similarity:Contains 1 MYND-type zinc finger.,similarity:Contains 1 PHD-type zinc finger.,similarity:Contains 1 PWWP domain.,
Background	The protein encoded by this gene was first identified by its ability to bind the adenovirus E1A protein. The protein localizes to the nucleus. It functions as a transcriptional repressor, and expression of E1A inhibits this repression. Alternatively spliced transcript variants encoding different isoforms have been

Nanjing BYabscience technology Co.,Ltd



identified. [provided by RefSeq, Jul 2008],

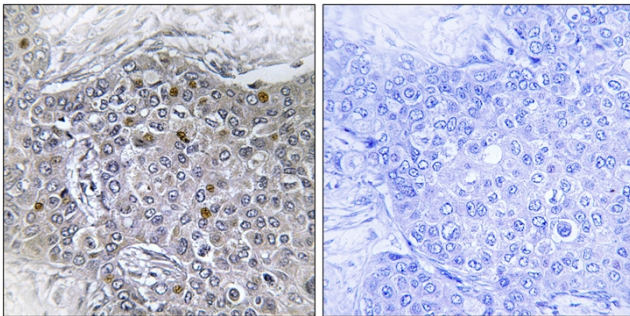
matters needing attention

Avoid repeated freezing and thawing!

Usage suggestions

This product can be used in immunological reaction related experiments. For more information, please consult technical personnel.

Products Images



Immunohistochemistry analysis of paraffin-embedded human breast carcinoma tissue, using ZMY11 Antibody. The picture on the right is blocked with the synthesized peptide.