



ASF1B Polyclonal Antibody

Catalog No	BYab-01543
Isotype	IgG
Reactivity	Human;Mouse;Rat
Applications	WB;IHC;IF;ELISA
Gene Name	ASF1B
Protein Name	Histone chaperone ASF1B
Immunogen	The antiserum was produced against synthesized peptide derived from human ASF1B. AA range:101-150
Specificity	ASF1B Polyclonal Antibody detects endogenous levels of ASF1B protein.
Formulation	Liquid in PBS containing 50% glycerol, 0.5% BSA and 0.02% sodium azide.
Source	Polyclonal, Rabbit,IgG
Purification	The antibody was affinity-purified from rabbit antiserum by affinity-chromatography using epitope-specific immunogen.
Dilution	WB: 1/500 - 1/2000. IHC: 1/100 - 1/300. ELISA: 1/5000.. IF 1:50-200
Concentration	1 mg/ml
Purity	≥90%
Storage Stability	-20°C/1 year
Synonyms	ASF1B; Histone chaperone ASF1B; Anti-silencing function protein 1 homolog B; hAsf1; hAsf1b; CCG1-interacting factor A-II; CIA-II; hCIA-II
Observed Band	26kD
Cell Pathway	Nucleus .
Tissue Specificity	Highly expressed in testis and at lower levels in colon, small intestine and thymus.
Function	function:Histone chaperone that facilitates histone deposition and histone exchange and removal during nucleosome assembly and disassembly. Cooperates with chromatin assembly factor 1 (CAF-1) to promote replication-dependent chromatin assembly. Does not participate in replication-independent nucleosome deposition which is mediated by ASF1A and HIRA. Required for spermatogenesis..PTM:Phosphorylated by TLK1 and TLK2..similarity:Belongs to the ASF1 family..subunit:Interacts with histone H3 (including both histone H3.1 and H3.3) and histone H4. Interacts with the CHAF1A, CHAF1B and RBBP4 subunits of the CAF-1 complex. Interacts with HAT1, NASP, TAF1, TLK1 and TLK2..tissue specificity:Highly expressed in testis

Nanjing BYabscience technology Co.,Ltd



and at lower levels in colon, small intestine and thymus.,

Background

This gene encodes a member of the H3/H4 family of histone chaperone proteins and is similar to the anti-silencing function-1 gene in yeast. The encoded protein is the substrate of the tousel-like kinase family of cell cycle-regulated kinases, and may play a key role in modulating the nucleosome structure of chromatin by ensuring a constant supply of histones at sites of nucleosome assembly. [provided by RefSeq, Jul 2008],

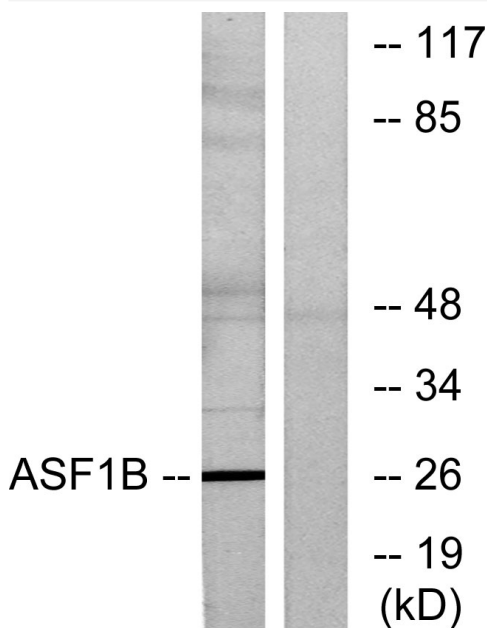
matters needing attention

Avoid repeated freezing and thawing!

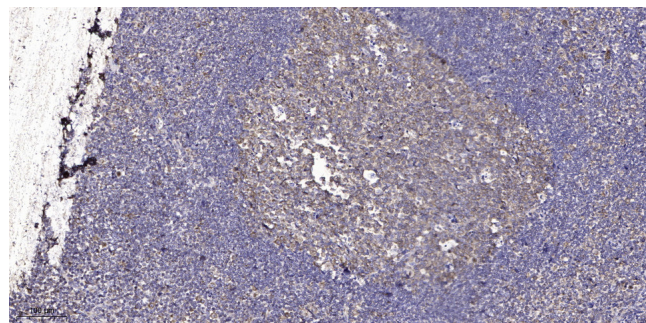
Usage suggestions

This product can be used in immunological reaction related experiments. For more information, please consult technical personnel.

Products Images



Western blot analysis of lysates from K562 cells, using ASF1B Antibody. The lane on the right is blocked with the synthesized peptide.



Immunohistochemical analysis of paraffin-embedded human tonsil. 1, Antibody was diluted at 1:200(4° overnight). 2, Tris-EDTA, pH9.0 was used for antigen retrieval. 3, Secondary antibody was diluted at 1:200(room temperature, 45min).

Nanjing BYabs science technology Co.,Ltd