



# ALY Polyclonal Antibody

Catalog No	BYab-01526
Isotype	IgG
Reactivity	Human;Mouse;Rat
Applications	WB;ELISA
Gene Name	ALYREF
Protein Name	THO complex subunit 4
Immunogen	The antiserum was produced against synthesized peptide derived from human THOC4. AA range:121-170
Specificity	ALY Polyclonal Antibody detects endogenous levels of ALY protein.
Formulation	Liquid in PBS containing 50% glycerol, 0.5% BSA and 0.02% sodium azide.
Source	Polyclonal, Rabbit,IgG
Purification	The antibody was affinity-purified from rabbit antiserum by affinity-chromatography using epitope-specific immunogen.
Dilution	Western Blot: 1/500 - 1/2000. ELISA: 1/10000. Not yet tested in other applications.
Concentration	1 mg/ml
Purity	≥90%
Storage Stability	-20°C/1 year
Synonyms	ALYREF; ALY; BEF; THOC4; THO complex subunit 4; Tho4; Ally of AML-1 and LEF-1; Aly/REF export factor; Transcriptional coactivator Aly/REF; bZIP-enhancing factor BEF
Observed Band	27kD
Cell Pathway	Nucleus . Nucleus speckle . Cytoplasm . Colocalizes with the core EJC, ALYREF/THOC4, NXF1 and DDX39B in the nucleus and nuclear speckles. Travels to the cytoplasm as part of the exon junction complex (EJC) bound to mRNA (PubMed:19324961). Localizes to regions surrounding nuclear speckles known as perispeckles in which TREX complex assembly seems to occur (PubMed:23826332). .
Tissue Specificity	Expressed in a wide variety of cancer types.
Function	disease:Antibodies against THOC4 are found in sera of patients with systemic lupus erythematosus (SLE).,function:Acts as chaperone and promotes the dimerization of transcription factors containing basic leucine zipper (bZIP) domains and thereby promotes transcriptional activation. Plays a role in mRNA

Nanjing BYabscience technology Co.,Ltd



processing and export. May function as scaffold that mediates interactions between proteins and/or RNA. Integral part of the THO/TREX complex that is recruited to transcribed genes and travels with the RNA polymerase during elongation. Is part of the exon junction complex that remains associated with spliced mRNA and plays an important role in mRNA export and nonsense-mediated RNA decay. Directs mRNA derived from Herpes simplex virus intron-less genes to the NXF1-mediated export pathway.,PTM:Arg-50 and Arg-204 are dimethylated, probably to asymmetric dimethylarginine.,PTM:Phosphorylated upo

**Background**

The protein encoded by this gene is a heat stable, nuclear protein and functions as a molecular chaperone. It is thought to regulate dimerization, DNA binding, and transcriptional activity of basic region-leucine zipper (bZIP) proteins. [provided by RefSeq, Jul 2008],

**matters needing attention**

Avoid repeated freezing and thawing!

**Usage suggestions**

This product can be used in immunological reaction related experiments. For more information, please consult technical personnel.

Nanjing BYabscience technology Co.,Ltd

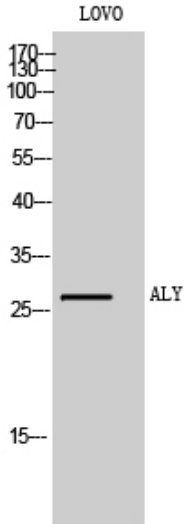
网址: [www.njbybio.com](http://www.njbybio.com)

官方热线: 025-5229-8998

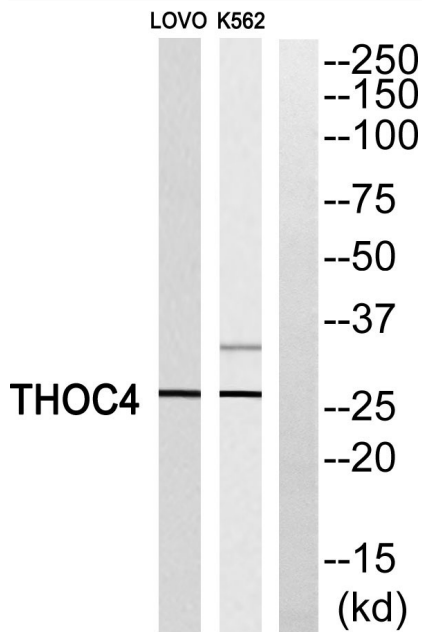
监督电话: 15950492658



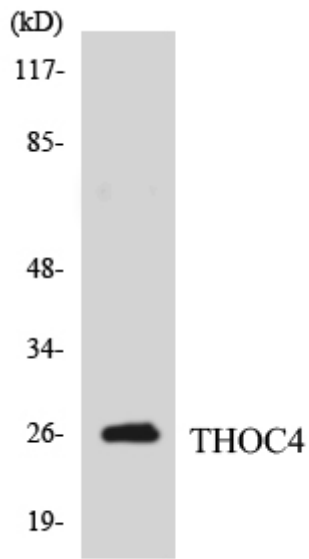
## Products Images



Western Blot analysis of LOVO cells using ALY Polyclonal Antibody



Western blot analysis of THOC4 Antibody. The lane on the right is blocked with the THOC4 peptide.



Western blot analysis of the lysates from HepG2 cells using THOC4 antibody.