



# IRF-3 (phospho Ser385) Polyclonal Antibody

<b>Catalog No</b>	BYab-01386
<b>Isotype</b>	IgG
<b>Reactivity</b>	Human;Rat;Mouse;
<b>Applications</b>	WB;IHC;IF;ELISA
<b>Gene Name</b>	IRF3
<b>Protein Name</b>	Interferon regulatory factor 3
<b>Immunogen</b>	The antiserum was produced against synthesized peptide derived from human IRF-3 around the phosphorylation site of Ser385. AA range:351-400
<b>Specificity</b>	Phospho-IRF-3 (S385) Polyclonal Antibody detects endogenous levels of IRF-3 protein only when phosphorylated at S385.
<b>Formulation</b>	Liquid in PBS containing 50% glycerol, 0.5% BSA and 0.02% sodium azide.
<b>Source</b>	Polyclonal, Rabbit,IgG
<b>Purification</b>	The antibody was affinity-purified from rabbit antiserum by affinity-chromatography using epitope-specific immunogen.
<b>Dilution</b>	Western Blot: 1/500 - 1/2000. Immunohistochemistry: 1/100 - 1/300. Immunofluorescence: 1/200 - 1/1000. ELISA: 1/10000. Not yet tested in other applications.
<b>Concentration</b>	1 mg/ml
<b>Purity</b>	≥90%
<b>Storage Stability</b>	-20°C/1 year
<b>Synonyms</b>	IRF3; Interferon regulatory factor 3; IRF-3
<b>Observed Band</b>	48-55kd
<b>Cell Pathway</b>	Cytoplasm . Nucleus . Mitochondrion . Shuttles between cytoplasmic and nuclear compartments, with export being the prevailing effect (PubMed:10805757). When activated, IRF3 interaction with CREBBP prevents its export to the cytoplasm (PubMed:10805757). Recruited to mitochondria via TOMM70:HSP90AA1 upon Sendai virus infection (PubMed:25609812). .
<b>Tissue Specificity</b>	Expressed constitutively in a variety of tissues.
<b>Function</b>	function:Mediates interferon-stimulated response element (ISRE) promoter activation. Functions as a molecular switch for antiviral activity. DsRNA generated during the course of a viral infection leads to IRF3 phosphorylation on the C-terminal serine/threonine cluster. This induces a conformational change, leading to its dimerization, nuclear localization and association with CREB binding protein (CREBBP) to form dsRNA-activated factor 1 (DRAF1), a complex which

**Nanjing BYabs science technology Co.,Ltd**



activates the transcription of genes under the control of ISRE. The complex binds to the IE and PRDIII regions on the IFN-alpha and IFN-beta promoters respectively. IRF-3 does not have any transcription activation domains.,PTM:Constitutively phosphorylated on many serines residues. C-terminal serine/threonine cluster is phosphorylated in response of induction by IKBKE and TBK1. Ser-385 and Ser-386 may be specifically phosphoryla

## Background

This gene encodes a member of the interferon regulatory transcription factor (IRF) family. The encoded protein is found in an inactive cytoplasmic form that upon serine/threonine phosphorylation forms a complex with CREBBP. This complex translocates to the nucleus and activates the transcription of interferons alpha and beta, as well as other interferon-induced genes. Alternatively spliced transcript variants encoding multiple isoforms have been observed for this gene. [provided by RefSeq, Nov 2011],

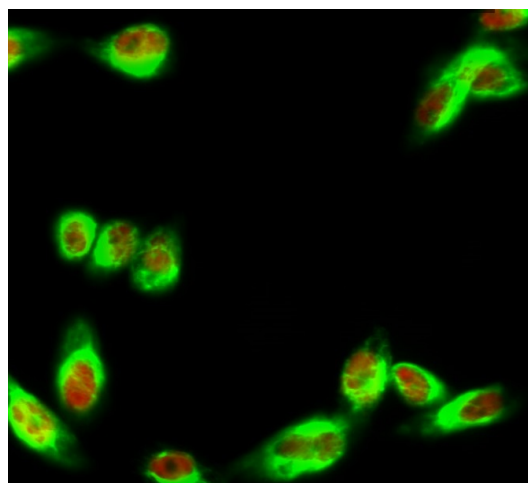
## matters needing attention

Avoid repeated freezing and thawing!

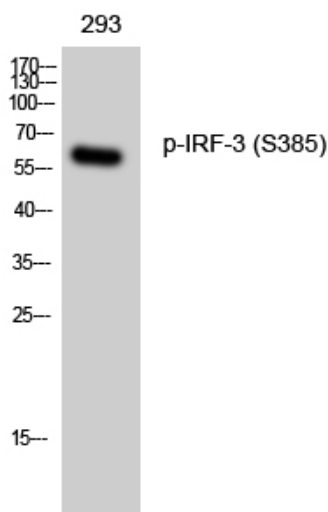
## Usage suggestions

This product can be used in immunological reaction related experiments. For more information, please consult technical personnel.

## Products Images



Immunofluorescence analysis of HeLa cell. 1,IRF-3 (phospho Ser385) Polyclonal Antibody(red) was diluted at 1:200(4° overnight). COX IV Monoclonal Antibody(6C8)(green) was diluted at 1:200(4° overnight). 2, Goat Anti Rabbit Alexa Fluor 594 Catalog:RS3611 was diluted at 1:1000(room temperature, 50min). Goat Anti Mouse Alexa Fluor 488 Catalog:RS3208 was diluted at 1:1000(room temperature, 50min).



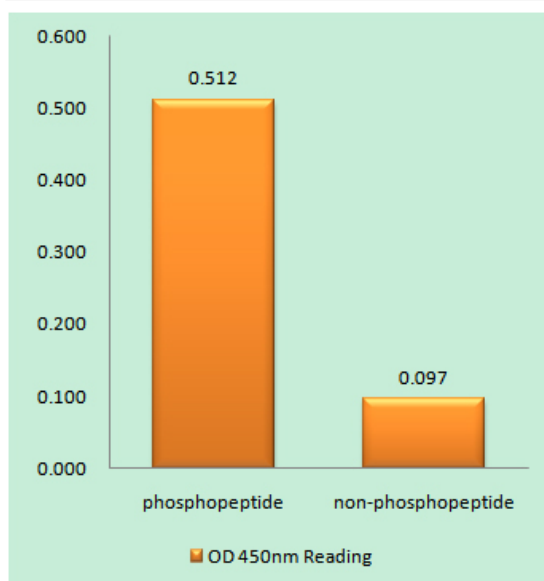
Western Blot analysis of 293 cells using Phospho-IRF-3 (S385) Polyclonal Antibody

**Nanjing BYabs science technology Co.,Ltd**

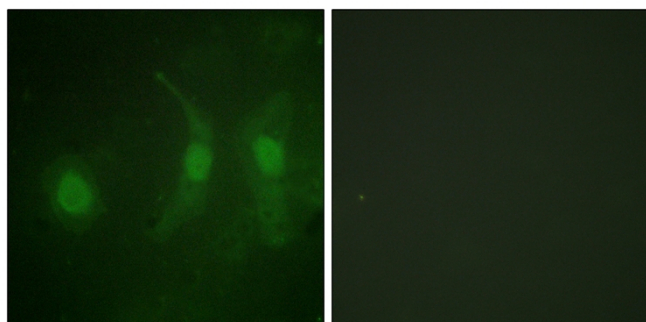
网址: [www.njbybio.com](http://www.njbybio.com)

官方热线: 025-5229-8998

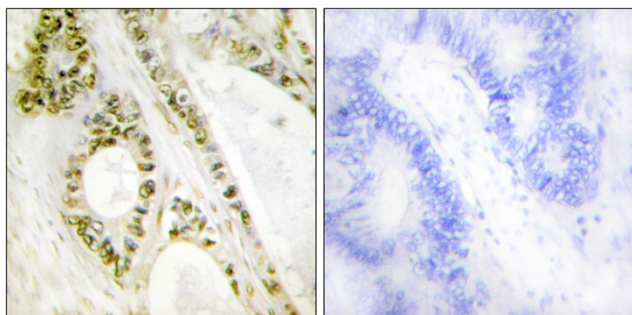
监督电话: 15950492658



Enzyme-Linked Immunosorbent Assay (Phospho-ELISA) for Immunogen Phosphopeptide (Phospho-left) and Non-Phosphopeptide (Phospho-right), using IRF-3 (Phospho-Ser385) Antibody



Immunofluorescence analysis of HeLa cells, using IRF-3 (Phospho-Ser385) Antibody. The picture on the right is blocked with the phosphopeptide.



Immunohistochemistry analysis of paraffin-embedded human colon carcinoma, using IRF-3 (Phospho-Ser385) Antibody. The picture on the right is blocked with the phosphopeptide.