



MEF-2 (phospho Thr319) Polyclonal Antibody

Catalog No	BYab-01260
Isotype	IgG
Reactivity	Human;Mouse;Rat
Applications	WB;IHC;IF;ELISA
Gene Name	MEF2A
Protein Name	Myocyte-specific enhancer factor 2A
Immunogen	The antiserum was produced against synthesized peptide derived from human MEF2A around the phosphorylation site of Thr319. AA range:296-345
Specificity	Phospho-MEF-2 (T319) Polyclonal Antibody detects endogenous levels of MEF-2 protein only when phosphorylated at T319.
Formulation	Liquid in PBS containing 50% glycerol, 0.5% BSA and 0.02% sodium azide.
Source	Polyclonal, Rabbit,IgG
Purification	The antibody was affinity-purified from rabbit antiserum by affinity-chromatography using epitope-specific immunogen.
Dilution	WB: 1/500 - 1/2000. IHC: 1/100 - 1/300. ELISA: 1/20000.. IF 1:50-200
Concentration	1 mg/ml
Purity	≥90%
Storage Stability	-20°C/1 year
Synonyms	MEF2A; MEF2; Myocyte-specific enhancer factor 2A; Serum response factor-like protein 1
Observed Band	
Cell Pathway	Nucleus .
Tissue Specificity	Isoform MEF2 and isoform MEFA are expressed only in skeletal and cardiac muscle and in the brain. Isoform RSRFC4 and isoform RSRFC9 are expressed in all tissues examined.
Function	disease:Defects in MEF2A might be a cause of autosomal dominant coronary artery disease 1 with myocardial infarction (ADCAD1) [MIM:608320].,function:Transcriptional activator which binds specifically to the MEF2 element, 5'-YTA[AT](4)TAR-3', found in numerous muscle-specific genes. Also involved in the activation of numerous growth factor- and stress-induced genes. Mediates cellular functions not only in skeletal and cardiac muscle development, but also in neuronal differentiation and survival. Plays diverse roles in the control of cell growth, survival and apoptosis via p38 MAPK signaling in muscle-specific and/or growth factor-related transcription. In cerebellar granule

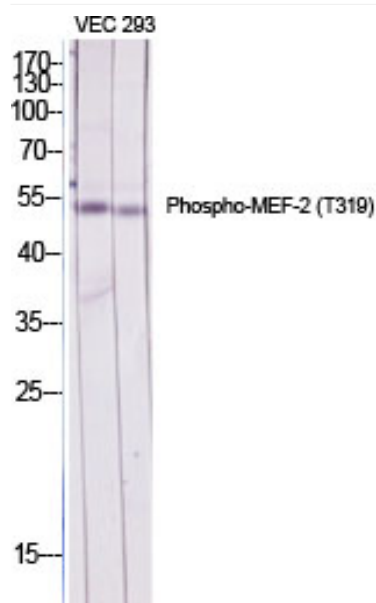
Nanjing BYabscience technology Co.,Ltd



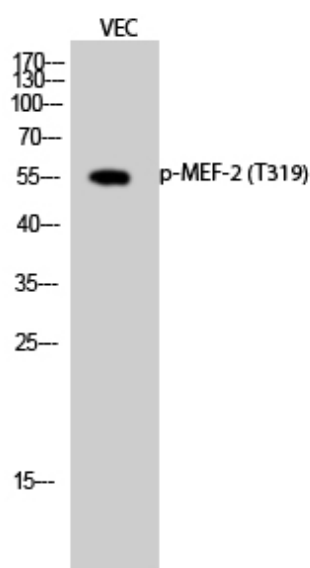
	neurons, phosphorylated and sumoylated MEF2A represses transcription of NUR77 promoting synaptic differentiation.,PTM:Acetylation on Lys-403 activates transcriptional activity. Acetylated by p300 on several sites in di
Background	The protein encoded by this gene is a DNA-binding transcription factor that activates many muscle-specific, growth factor-induced, and stress-induced genes. The encoded protein can act as a homodimer or as a heterodimer and is involved in several cellular processes, including muscle development, neuronal differentiation, cell growth control, and apoptosis. Defects in this gene could be a cause of autosomal dominant coronary artery disease 1 with myocardial infarction (ADCAD1). Several transcript variants encoding different isoforms have been found for this gene.[provided by RefSeq, Jan 2010],
matters needing attention	Avoid repeated freezing and thawing!
Usage suggestions	This product can be used in immunological reaction related experiments. For more information, please consult technical personnel.



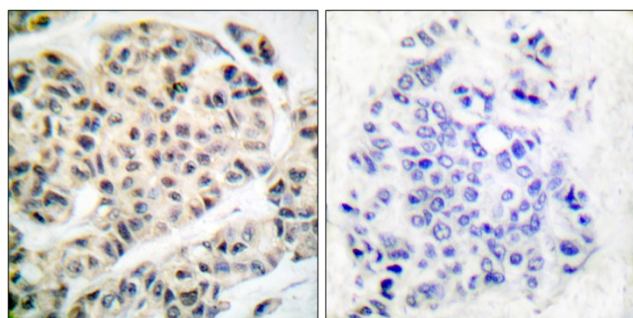
Products Images



Western Blot analysis of various cells using Phospho-MEF-2 (T319) Polyclonal Antibody diluted at 1:2000 cells nucleus extracted by Minute TM Cytoplasmic and Nuclear Fractionation kit (SC-003, Invent biotech, MN, USA).



Western Blot analysis of VEC cells using Phospho-MEF-2 (T319) Polyclonal Antibody diluted at 1:2000 cells nucleus extracted by Minute TM Cytoplasmic and Nuclear Fractionation kit (SC-003, Invent biotech, MN, USA).



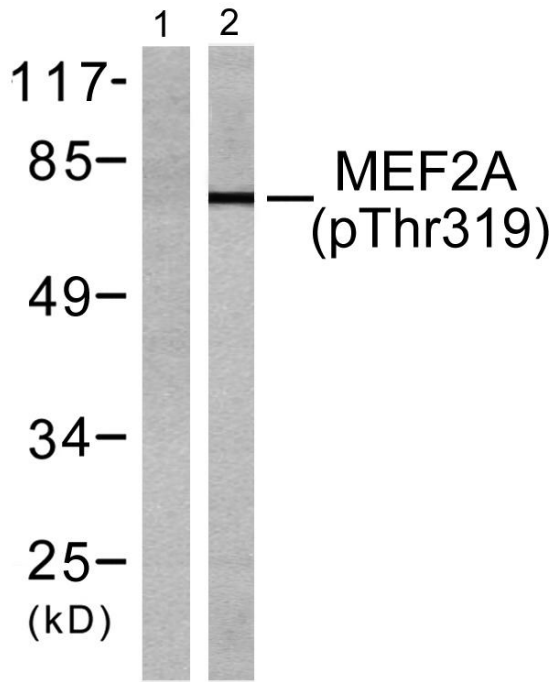
Immunohistochemistry analysis of paraffin-embedded human breast carcinoma, using MEF2A (Phospho-Thr319) Antibody. The picture on the right is blocked with the phospho peptide.

Nanjing BYabs science technology Co., Ltd

网址: www.njbybio.com

官方热线: 025-5229-8998

监督电话: 15950492658



Western blot analysis of lysates from K562 cells treated with UV 15', using MEF2A (Phospho-Thr319) Antibody. The lane on the left is blocked with the phospho peptide.