



Syntaxin 1 Polyclonal Antibody

Catalog No	BYab-00771
Isotype	IgG
Reactivity	Human;Mouse;Rat
Applications	WB;IHC;IF;ELISA
Gene Name	STX1A
Protein Name	Syntaxin-1A
Immunogen	The antiserum was produced against synthesized peptide derived from the Internal region of human STX1A. AA range:31-80
Specificity	Syntaxin 1 Polyclonal Antibody detects endogenous levels of Syntaxin 1 protein.
Formulation	Liquid in PBS containing 50% glycerol, 0.5% BSA and 0.02% sodium azide.
Source	Polyclonal, Rabbit,IgG
Purification	The antibody was affinity-purified from rabbit antiserum by affinity-chromatography using epitope-specific immunogen.
Dilution	WB: 1/500 - 1/2000. IHC-p: 1/100-1/300. ELISA: 1/20000.. IF 1:50-200
Concentration	1 mg/ml
Purity	≥90%
Storage Stability	-20°C/1 year
Synonyms	STX1A; STX1; Syntaxin-1A; Neuron-specific antigen HPC-1
Observed Band	30kD
Cell Pathway	Cytoplasmic vesicle, secretory vesicle, synaptic vesicle membrane ; Single-pass type IV membrane protein . Cell junction, synapse, synaptosome . Cell membrane . Colocalizes with KCNB1 at the cell membrane. .; [Isoform 2]: Secreted .
Tissue Specificity	[Isoform 1]: Highly expressed in embryonic spinal cord and ganglia and in adult cerebellum and cerebral cortex. .; [Isoform 2]: Expressed in heart, liver, fat, skeletal muscle, kidney and brain.
Function	disease:Haploinsufficiency of STX1A may be the cause of certain cardiovascular and musculo-skeletal abnormalities observed in Williams-Beuren syndrome (WBS), a rare developmental disorder. It is a contiguous gene deletion syndrome involving genes from chromosome band 7q11.23.,function:Potentially involved in docking of synaptic vesicles at presynaptic active zones. May play a critical role in neurotransmitter exocytosis.,similarity:Belongs to the syntaxin family.,similarity:Contains 1 t-SNARE coiled-coil homology domain.,subunit:Part of the SNARE core complex containing SNAP25, VAMP2 and STX1A. This complex binds to CPLX1. Binds SYTL4 and STXBP6. Found in a ternary complex

Nanjing BYabs science technology Co.,Ltd



with STX1A and SNAP25. Interacts with OTOF (By similarity). Found in a complex with VAMP8 and SNAP23. Interacts with VAPA and SYBU.,tissue specificity:Isoform 1 is highly expressed in embryonic spinal chord and ganglia

Background

This gene encodes a member of the syntaxin superfamily. Syntaxins are nervous system-specific proteins implicated in the docking of synaptic vesicles with the presynaptic plasma membrane. Syntaxins possess a single C-terminal transmembrane domain, a SNARE [Soluble NSF (N-ethylmaleimide-sensitive fusion protein)-Attachment protein REceptor] domain (known as H3), and an N-terminal regulatory domain (Habc). Syntaxins bind synaptotagmin in a calcium-dependent fashion and interact with voltage dependent calcium and potassium channels via the C-terminal H3 domain. This gene product is a key molecule in ion channel regulation and synaptic exocytosis. Alternatively spliced transcript variants encoding different isoforms have been found for this gene.[provided by RefSeq, Sep 2009],

matters needing attention

Avoid repeated freezing and thawing!

Usage suggestions

This product can be used in immunological reaction related experiments. For more information, please consult technical personnel.

Nanjing BYabscience technology Co.,Ltd

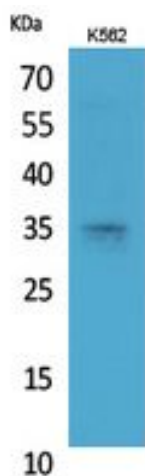
网址: www.njbybio.com

官方热线: 025-5229-8998

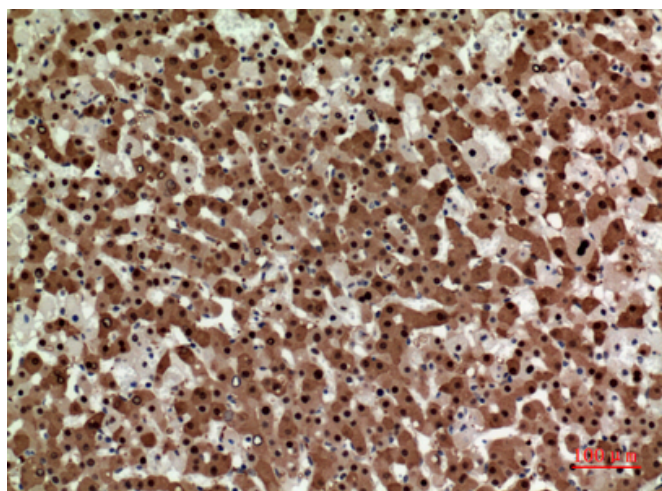
监督电话: 15950492658



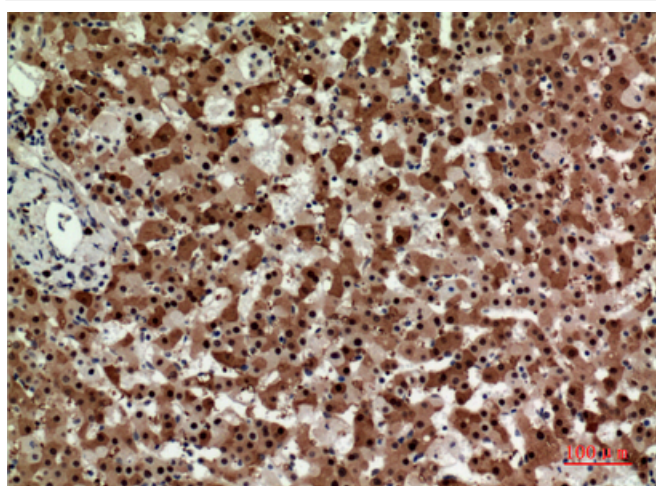
Products Images



Western Blot analysis of K562 cells using Syntaxin 1 Polyclonal Antibody. Secondary antibody(catalog#:RS0002) was diluted at 1:20000



Immunohistochemical analysis of paraffin-embedded human-liver, antibody was diluted at 1:100



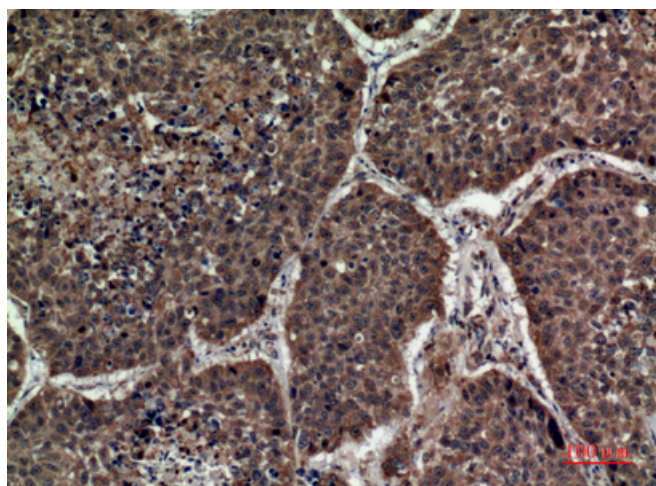
Immunohistochemical analysis of paraffin-embedded human-liver, antibody was diluted at 1:100

Nanjing BYabs science technology Co.,Ltd

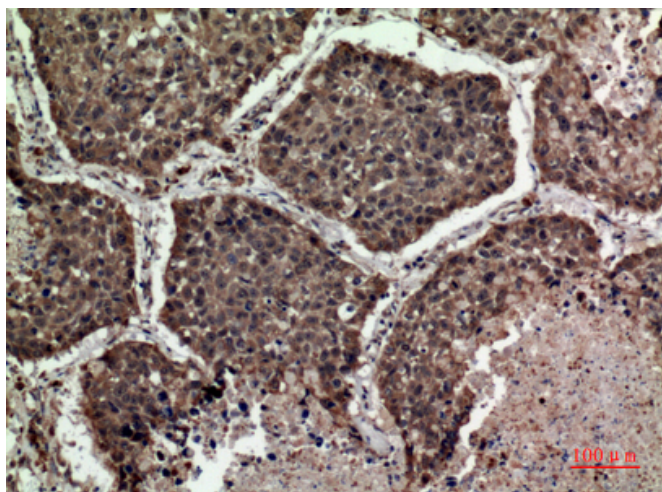
网址: www.njbybio.com

官方热线: 025-5229-8998

监督电话: 15950492658



Immunohistochemical analysis of paraffin-embedded human-lung, antibody was diluted at 1:100



Immunohistochemical analysis of paraffin-embedded human-lung, antibody was diluted at 1:100