



# TAUT Polyclonal Antibody

<b>Catalog No</b>	BYab-00749
<b>Isotype</b>	IgG
<b>Reactivity</b>	Human;Mouse;Rat
<b>Applications</b>	WB;IHC;IF;ELISA
<b>Gene Name</b>	SLC6A6
<b>Protein Name</b>	Sodium- and chloride-dependent taurine transporter
<b>Immunogen</b>	The antiserum was produced against synthesized peptide derived from human SLC6A6. AA range:561-610
<b>Specificity</b>	TAUT Polyclonal Antibody detects endogenous levels of TAUT protein.
<b>Formulation</b>	Liquid in PBS containing 50% glycerol, 0.5% BSA and 0.02% sodium azide.
<b>Source</b>	Polyclonal, Rabbit,IgG
<b>Purification</b>	The antibody was affinity-purified from rabbit antiserum by affinity-chromatography using epitope-specific immunogen.
<b>Dilution</b>	WB: 1/500 - 1/2000. IHC: 1/100 - 1/300. ELISA: 1/40000.. IF 1:50-200
<b>Concentration</b>	1 mg/ml
<b>Purity</b>	≥90%
<b>Storage Stability</b>	-20°C/1 year
<b>Synonyms</b>	SLC6A6; Sodium- and chloride-dependent taurine transporter; Solute carrier family 6 member 6
<b>Observed Band</b>	70kD
<b>Cell Pathway</b>	Cell membrane ; Multi-pass membrane protein .
<b>Tissue Specificity</b>	Expressed abundantly in placenta and skeletal muscle, at intermediate levels in heart, brain, lung, kidney and pancreas and at low levels in liver.
<b>Function</b>	function:Required for the uptake of taurine.,PTM:Down-regulated upon Ser-322 phosphorylation.,similarity:Belongs to the sodium:neurotransmitter symporter (SNF) family.,
<b>Background</b>	This gene encodes a multi-pass membrane protein that is a member of a family of sodium and chloride-ion dependent transporters. The encoded protein transports taurine and beta-alanine. There is a pseudogene for this gene on chromosome 21. Alternative splicing results in multiple transcript variants. [provided by RefSeq, May 2013],

**Nanjing BYabscience technology Co.,Ltd**



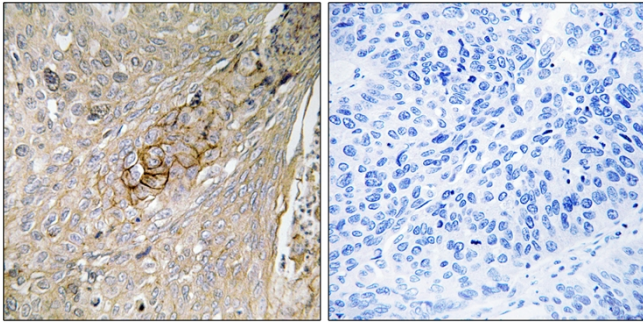
**matters needing attention**

Avoid repeated freezing and thawing!

**Usage suggestions**

This product can be used in immunological reaction related experiments. For more information, please consult technical personnel.

## Products Images



Immunohistochemistry analysis of paraffin-embedded human lung carcinoma tissue, using SLC6A6 Antibody. The picture on the right is blocked with the synthesized peptide.