



# ABCB7 Polyclonal Antibody

Catalog No	BYab-00652
Isotype	IgG
Reactivity	Human;Rat;Mouse;
Applications	WB;IHC;IF;ELISA
Gene Name	ABCB7
Protein Name	ATP-binding cassette sub-family B member 7 mitochondrial
Immunogen	The antiserum was produced against synthesized peptide derived from human ABCB7. AA range:691-740
Specificity	ABCB7 Polyclonal Antibody detects endogenous levels of ABCB7 protein.
Formulation	Liquid in PBS containing 50% glycerol, 0.5% BSA and 0.02% sodium azide.
Source	Polyclonal, Rabbit,IgG
Purification	The antibody was affinity-purified from rabbit antiserum by affinity-chromatography using epitope-specific immunogen.
Dilution	WB: 1/500 - 1/2000. IHC: 1/100 - 1/300. ELISA: 1/40000.. IF 1:50-200
Concentration	1 mg/ml
Purity	≥90%
Storage Stability	-20°C/1 year
Synonyms	ABCB7; ABC7; ATP-binding cassette sub-family B member 7; mitochondrial; ATP-binding cassette transporter 7; ABC transporter 7 protein
Observed Band	Human:83kD,Mouse/Rat 100kD
Cell Pathway	Mitochondrion inner membrane ; Multi-pass membrane protein .
Tissue Specificity	Human esophagus tumor,Muscle,Placenta,Umbilical cord blood,
Function	disease:Defects in ABCB7 are the cause of X-linked sideroblastic anemia with ataxia (ASAT) [MIM:301310]. ASAT is a recessive disorder characterized by an infantile to early childhood onset of nonprogressive cerebellar ataxia and mild anemia with hypochromia and microcytosis.,function:Could be involved in the transport of heme from the mitochondria to the cytosol. Plays a central role in the maturation of cytosolic iron-sulfur (Fe/S) cluster-containing proteins.,similarity:Belongs to the ABC transporter family. Heavy Metal importer (TC 3.A.1.210) subfamily.,similarity:Contains 1 ABC transmembrane type-1 domain.,similarity:Contains 1 ABC transporter domain.,subunit:Homodimer or heterodimer .,

Nanjing BYabscience technology Co.,Ltd

**Background**

The membrane-associated protein encoded by this gene is a member of the superfamily of ATP-binding cassette (ABC) transporters. ABC proteins transport various molecules across extra- and intra-cellular membranes. ABC genes are divided into seven distinct subfamilies (ABC1, MDR/TAP, MRP, ALD, OABP, GCN20, White). This protein is a member of the MDR/TAP subfamily. Members of the MDR/TAP subfamily are involved in multidrug resistance as well as antigen presentation. This gene encodes a half-transporter involved in the transport of heme from the mitochondria to the cytosol. With iron/sulfur cluster precursors as its substrates, this protein may play a role in metal homeostasis. Mutations in this gene have been associated with mitochondrial iron accumulation and isodicentric (X)(q13) and sideroblastic anemia. Alternatively spliced transcript variants encoding multiple isoforms hav

**matters needing attention**

Avoid repeated freezing and thawing!

**Usage suggestions**

This product can be used in immunological reaction related experiments. For more information, please consult technical personnel.

Nanjing BYabscience technology Co.,Ltd

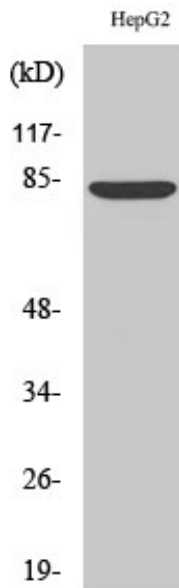
网址: [www.njbybio.com](http://www.njbybio.com)

官方热线: 025-5229-8998

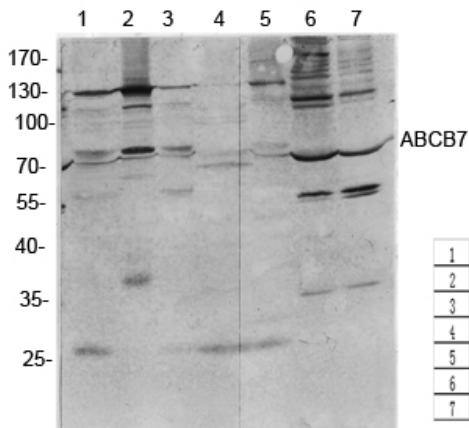
监督电话: 15950492658



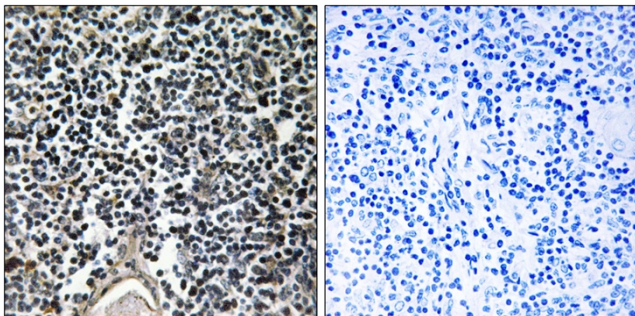
## Products Images



Western Blot analysis of various cells using ABCB7 Polyclonal Antibody diluted at 1:1000



Western Blot analysis of various cells using antibody diluted at 1:1000. Secondary antibody(catalog#:RS0002) was diluted at 1:20000



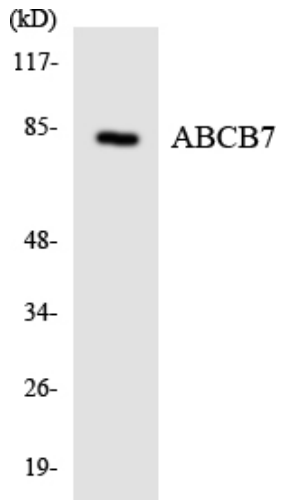
Immunohistochemistry analysis of paraffin-embedded human thymus gland, using ABCB7 Antibody. The picture on the right is blocked with the synthesized peptide.

Nanjing BYabscience technology Co.,Ltd

网址: [www.njbybio.com](http://www.njbybio.com)

官方热线: 025-5229-8998

监督电话: 15950492658



Western blot analysis of the lysates from HUVEC cells using ABCB7 antibody.