



TMEPAI Polyclonal Antibody

Catalog No	BYab-00588
Isotype	IgG
Reactivity	Human;Rat;Mouse;
Applications	WB;ELISA
Gene Name	PMEPA1 STAG1 TMEPAI
Protein Name	TMEPAI
Immunogen	Synthetic peptide from human protein at AA range: 240-287
Specificity	The antibody detects endogenous TMEPAI
Formulation	Liquid in PBS containing 50% glycerol, 0.5% BSA and 0.02% sodium azide.
Source	Polyclonal, Rabbit,IgG
Purification	The antibody was affinity-purified from rabbit antiserum by affinity-chromatography using epitope-specific immunogen.
Dilution	WB 1:500-2000, ELISA 1:10000-20000
Concentration	1 mg/ml
Purity	≥90%
Storage Stability	-20°C/1 year
Synonyms	Transmembrane prostate androgen-induced protein (Solid tumor-associated 1 protein)
Observed Band	36kD
Cell Pathway	Early endosome membrane; Single-pass membrane protein. Golgi apparatus membrane; Single-pass membrane protein.
Tissue Specificity	Highest expression in prostate. Also expressed in ovary.
Function	domain:The WW-binding motifs mediate interaction with NEDD4.,induction:By androgen.,similarity:Belongs to the PMEPA1 family.,subunit:Interacts with the WW domains of NEDD4.,tissue specificity:Highest expression in prostate. Also expressed in ovary.,
Background	This gene encodes a transmembrane protein that contains a Smad interacting motif (SIM). Expression of this gene is induced by androgens and transforming growth factor beta, and the encoded protein suppresses the androgen receptor and transforming growth factor beta signaling pathways through interactions with Smad proteins. Overexpression of this gene may play a role in multiple types of cancer. Alternatively spliced transcript variants encoding multiple isoforms have

Nanjing BYabscience technology Co.,Ltd



been observed for this gene. [provided by RefSeq, Dec 2011],

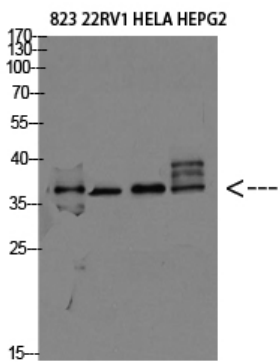
matters needing attention

Avoid repeated freezing and thawing!

Usage suggestions

This product can be used in immunological reaction related experiments. For more information, please consult technical personnel.

Products Images



Western blot analysis of 823 22RV1 HELA HEPG2 Cell Lysate, antibody was diluted at 1:2000. Secondary antibody(catalog#:RS0002) was diluted at 1:20000

Nanjing BYabscience technology Co.,Ltd

网址: www.njbybio.com

官方热线: 025-5229-8998

监督电话: 15950492658