



# TDE2L Polyclonal Antibody

Catalog No	BYab-00532
Isotype	IgG
Reactivity	Human;Mouse;Rat
Applications	WB;IHC;IF;ELISA
Gene Name	SERINC2
Protein Name	Serine incorporator 2
Immunogen	The antiserum was produced against synthesized peptide derived from human SERC2. AA range:341-390
Specificity	TDE2L Polyclonal Antibody detects endogenous levels of TDE2L protein.
Formulation	Liquid in PBS containing 50% glycerol, 0.5% BSA and 0.02% sodium azide.
Source	Polyclonal, Rabbit,IgG
Purification	The antibody was affinity-purified from rabbit antiserum by affinity-chromatography using epitope-specific immunogen.
Dilution	Western Blot: 1/500 - 1/2000. Immunohistochemistry: 1/100 - 1/300. Immunofluorescence: 1/200 - 1/1000. ELISA: 1/40000. Not yet tested in other applications.
Concentration	1 mg/ml
Purity	≥90%
Storage Stability	-20°C/1 year
Synonyms	SERINC2; TDE2L; FKSG84; Serine incorporator 2; Tumor differentially expressed protein 2-like
Observed Band	55kD
Cell Pathway	Membrane ; Multi-pass membrane protein .
Tissue Specificity	Colon,Liver,Pancreas,Uterus,
Function	similarity:Belongs to the TDE1 family.,
Background	similarity:Belongs to the TDE1 family.,
matters needing attention	Avoid repeated freezing and thawing!

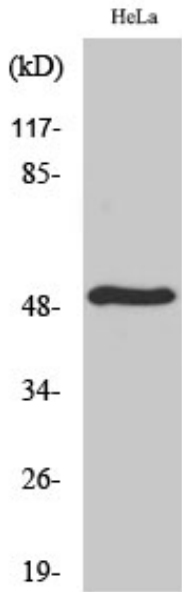
Nanjing BYabscience technology Co.,Ltd



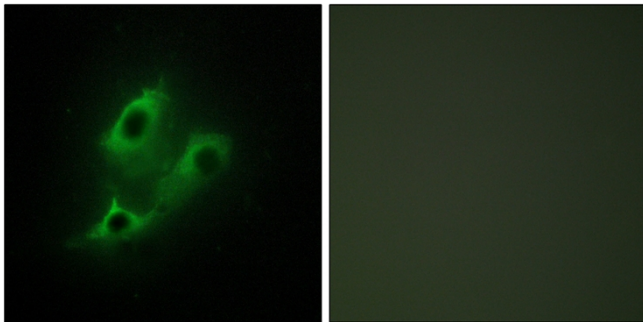
### Usage suggestions

This product can be used in immunological reaction related experiments. For more information, please consult technical personnel.

### Products Images



Western Blot analysis of various cells using TDE2L Polyclonal Antibody



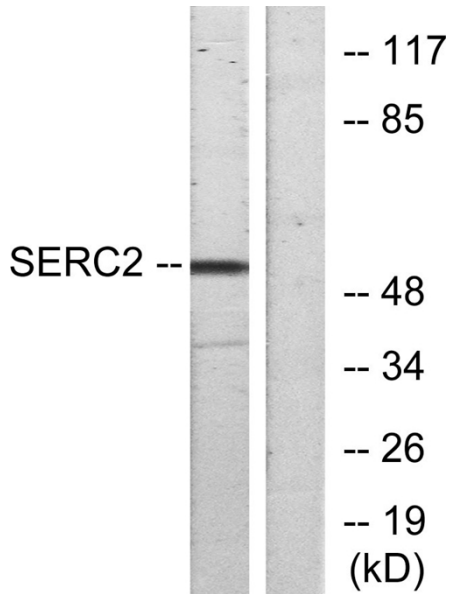
Immunofluorescence analysis of NIH/3T3 cells, using SERC2 Antibody. The picture on the right is blocked with the synthesized peptide.

Nanjing BYabs science technology Co.,Ltd

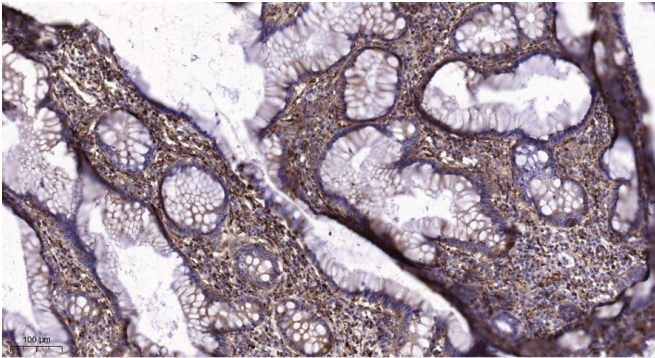
网址: [www.njbybio.com](http://www.njbybio.com)

官方热线: 025-5229-8998

监督电话: 15950492658



Western blot analysis of lysates from HeLa cells, using SERC2 Antibody. The lane on the right is blocked with the synthesized peptide.



Immunohistochemical analysis of paraffin-embedded human colon cancer. 1, Tris-EDTA, pH 9.0 was used for antigen retrieval. 2 Antibody was diluted at 1:200 (4° overnight). 3, Secondary antibody was diluted at 1:200 (room temperature, 45 min).