



Serinc1 Polyclonal Antibody

Catalog No	BYab-00521
Isotype	IgG
Reactivity	Human;Mouse;Rat
Applications	WB;IHC;IF;ELISA
Gene Name	SERINC1
Protein Name	Serine incorporator 1
Immunogen	The antiserum was produced against synthesized peptide derived from human SERC1. AA range:381-430
Specificity	Serinc1 Polyclonal Antibody detects endogenous levels of Serinc1 protein.
Formulation	Liquid in PBS containing 50% glycerol, 0.5% BSA and 0.02% sodium azide.
Source	Polyclonal, Rabbit,IgG
Purification	The antibody was affinity-purified from rabbit antiserum by affinity-chromatography using epitope-specific immunogen.
Dilution	Western Blot: 1/500 - 1/2000. Immunohistochemistry: 1/100 - 1/300. Immunofluorescence: 1/200 - 1/1000. ELISA: 1/20000. Not yet tested in other applications.
Concentration	1 mg/ml
Purity	≥90%
Storage Stability	-20°C/1 year
Synonyms	SERINC1; KIAA1253; TDE1L; TDE2; Serine incorporator 1; Tumor differentially expressed protein 1-like; Tumor differentially expressed protein 2
Observed Band	48kD
Cell Pathway	Endoplasmic reticulum membrane ; Multi-pass membrane protein .
Tissue Specificity	Adrenal gland,Brain,Epithelium,Liver,Testis,
Function	function:Enhances the incorporation of serine into phosphatidylserine and sphingolipids.,similarity:Belongs to the TDE1 family.,subunit:Interacts with SPTLC1.,
Background	function:Enhances the incorporation of serine into phosphatidylserine and sphingolipids.,similarity:Belongs to the TDE1 family.,subunit:Interacts with SPTLC1.,

Nanjing BYabscience technology Co.,Ltd



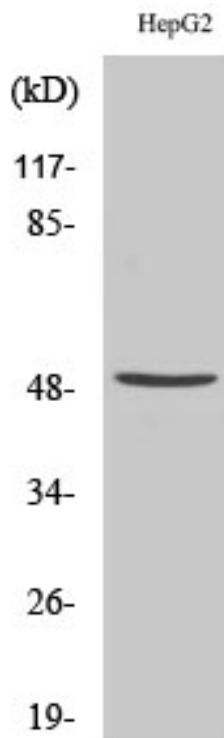
matters needing attention

Avoid repeated freezing and thawing!

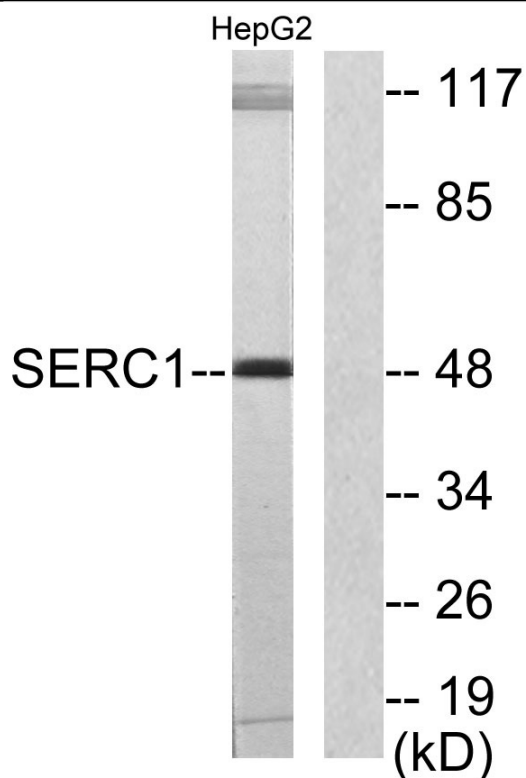
Usage suggestions

This product can be used in immunological reaction related experiments. For more information, please consult technical personnel.

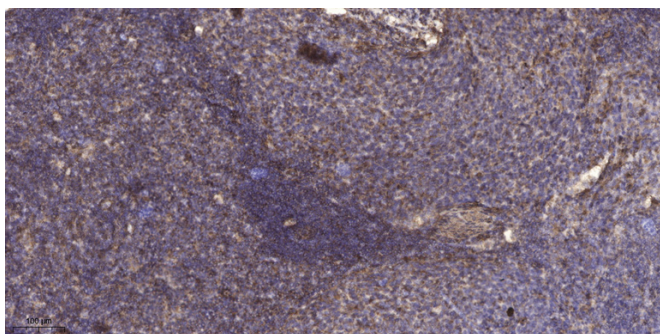
Products Images



Western Blot analysis of various cells using Serinc1 Polyclonal Antibody



Western blot analysis of lysates from HepG2 cells, using SERC1 Antibody. The lane on the right is blocked with the synthesized peptide.



Immunohistochemical analysis of paraffin-embedded human cervical carcinoma. 1, Antibody was diluted at 1:200(4° overnight). 2, Tris-EDTA,pH9.0 was used for antigen retrieval. 3,Secondary antibody was diluted at 1:200(room temperature, 45min).