



Rad23B Polyclonal Antibody

Catalog No	BYab-00508
Isotype	IgG
Reactivity	Human;Mouse;Rat
Applications	WB;IHC;IF;ELISA
Gene Name	RAD23B
Protein Name	UV excision repair protein RAD23 homolog B
Immunogen	The antiserum was produced against synthesized peptide derived from human RAD23B. AA range:1-50
Specificity	Rad23B Polyclonal Antibody detects endogenous levels of Rad23B protein.
Formulation	Liquid in PBS containing 50% glycerol, 0.5% BSA and 0.02% sodium azide.
Source	Polyclonal, Rabbit,IgG
Purification	The antibody was affinity-purified from rabbit antiserum by affinity-chromatography using epitope-specific immunogen.
Dilution	Western Blot: 1/500 - 1/2000. Immunohistochemistry: 1/100 - 1/300. Immunofluorescence: 1/200 - 1/1000. ELISA: 1/20000. Not yet tested in other applications.
Concentration	1 mg/ml
Purity	≥90%
Storage Stability	-20°C/1 year
Synonyms	RAD23B; UV excision repair protein RAD23 homolog B; HR23B; hHR23B; XP-C repair-complementing complex 58 kDa protein; p58
Observed Band	58kD
Cell Pathway	Nucleus. Cytoplasm. The intracellular distribution is cell cycle dependent. Localized to the nucleus and the cytoplasm during G1 phase. Nuclear levels decrease during S-phase; upon entering mitosis, relocalizes in the cytoplasm without association with chromatin.
Tissue Specificity	Epithelium,Testis,Thymus,Uterus,
Function	domain:The ubiquitin-like domain mediates interaction with MJD.,function:Plays a central role both in proteosomal degradation of misfolded proteins and DNA repair. Central component of a complex required to couple deglycosylation and proteasome-mediated degradation of misfolded proteins in the endoplasmic reticulum that are retrotranslocated in the cytosol. Involved in DNA excision repair by stabilizing XPC protein. May play a part in DNA damage recognition and/or in altering chromatin structure to allow access by damage-processing

Nanjing BYabscience technology Co.,Ltd



enzymes.,similarity:Belongs to the RAD23 family.,similarity:Contains 1 STI1 domain.,similarity:Contains 1 ubiquitin-like domain.,similarity:Contains 2 UBA domains.,subunit:Component of a complex required to couple retrotranslocation, ubiquitination and deglycosylation composed of NGLY1, SAKS1, AMFR, VCP and RAD23B (By similarity). Interacts with the 26S protea

Background

The protein encoded by this gene is one of two human homologs of *Saccharomyces cerevisiae* Rad23, a protein involved in the nucleotide excision repair (NER). This protein was found to be a component of the protein complex that specifically complements the NER defect of xeroderma pigmentosum group C (XP-c) cell extracts in vitro. This protein was also shown to interact with, and elevate the nucleotide excision activity of 3-methyladenine-DNA glycosylase (MPG), which suggested a role in DNA damage recognition in base excision repair. This protein contains an N-terminal ubiquitin-like domain, which was reported to interact with 26S proteasome, and thus this protein may be involved in the ubiquitin mediated proteolytic pathway in cells. Alternative splicing results in multiple transcript variants encoding distinct isoforms. [provided by RefSeq, Sep 2011],

matters needing attention

Avoid repeated freezing and thawing!

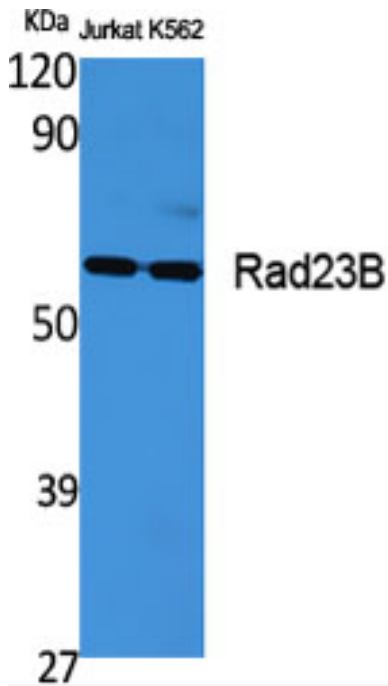
Usage suggestions

This product can be used in immunological reaction related experiments. For more information, please consult technical personnel.

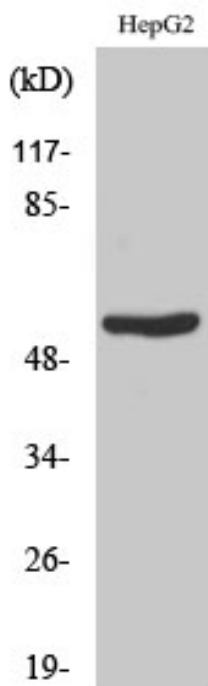
Nanjing BYabscience technology Co.,Ltd



Products Images



Western Blot analysis of various cells using Rad23B Polyclonal Antibody



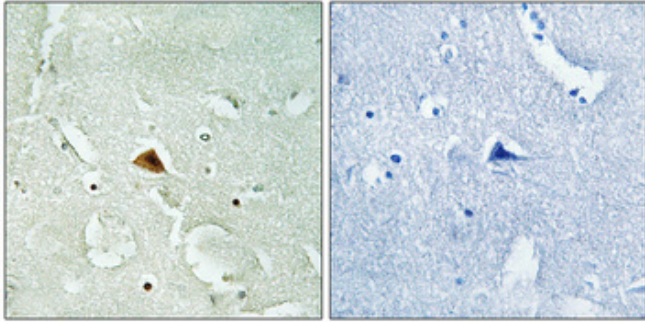
Western Blot analysis of HuvEc cells using Rad23B Polyclonal Antibody

Nanjing BYabs science technology Co.,Ltd

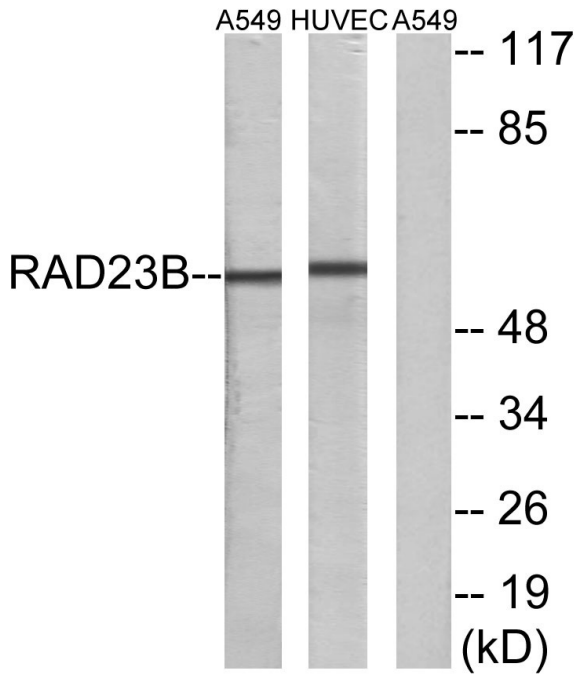
网址: www.njbybio.com

官方热线: 025-5229-8998

监督电话: 15950492658



Immunohistochemical analysis of paraffin-embedded Human brain. Antibody was diluted at 1:100(4° overnight). High-pressure and temperature Tris-EDTA,pH8.0 was used for antigen retrieval. Negative contrl (right) obtained from antibody was pre-absorbed by immunogen peptide.



Western blot analysis of lysates from A549 and HUVEC cells, using RAD23B Antibody. The lane on the right is blocked with the synthesized peptide.