



Nop132 Polyclonal Antibody

Catalog No	BYab-00464
Isotype	IgG
Reactivity	Human;Rat;Mouse;
Applications	WB;IHC;IF;ELISA
Gene Name	NOL8
Protein Name	Nucleolar protein 8
Immunogen	The antiserum was produced against synthesized peptide derived from human NOL8. AA range:1118-1167
Specificity	Nop132 Polyclonal Antibody detects endogenous levels of Nop132 protein.
Formulation	Liquid in PBS containing 50% glycerol, 0.5% BSA and 0.02% sodium azide.
Source	Polyclonal, Rabbit,IgG
Purification	The antibody was affinity-purified from rabbit antiserum by affinity-chromatography using epitope-specific immunogen.
Dilution	WB: 1/500 - 1/2000. IHC: 1/100 - 1/300. ELISA: 1/20000.. IF 1:50-200
Concentration	1 mg/ml
Purity	≥90%
Storage Stability	-20°C/1 year
Synonyms	NOL8; C9orf34; NOP132; Nucleolar protein 8; Nucleolar protein Nop132
Observed Band	130kD
Cell Pathway	Nucleus, nucleolus . Localizes in the nucleolar-organizing region during ribosome biogenesis.
Tissue Specificity	Expressed in various diffuse-type gastric cancers. Detected at lower levels in skeletal muscle.
Function	function:Plays an essential role in the survival of diffuse-type gastric cancer cells. May be involved in regulation of gene expression at the post-transcriptional level or in ribosome biogenesis in cancer cells.,induction:Up-regulated in diffuse-type gastric cancers.,PTM:Phosphorylated.,similarity:Contains 1 RRM (RNA recognition motif) domain.,subunit:Interacts with the GTP form of RRAGA, RRAGC and RRAGD. Interacts with NIP7.,tissue specificity:Expressed in various diffuse-type gastric cancers. Detected at lower levels in skeletal muscle.,
Background	NOL8 binds Ras-related GTP-binding proteins (see MIM 608267) and plays a role in cell growth (Sekiguchi et al., 2004 [PubMed 14660641]).[supplied by OMIM, Mar 2008],

Nanjing BYabs science technology Co.,Ltd

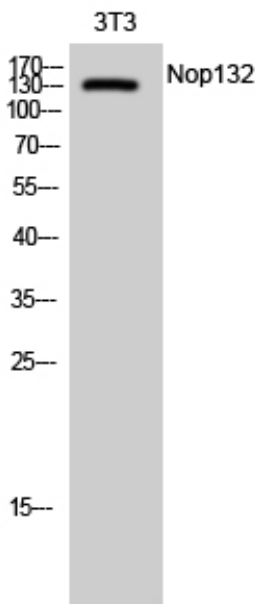
**matters needing attention**

Avoid repeated freezing and thawing!

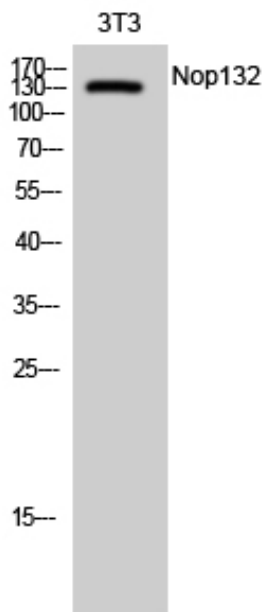
Usage suggestions

This product can be used in immunological reaction related experiments. For more information, please consult technical personnel.

Products Images



Western Blot analysis of 3T3 cells using Nop132 Polyclonal Antibody diluted at 1:1000 cells nucleus extracted by Minute TM Cytoplasmic and Nuclear Fractionation kit (SC-003, Inventbiotech, MN, USA).



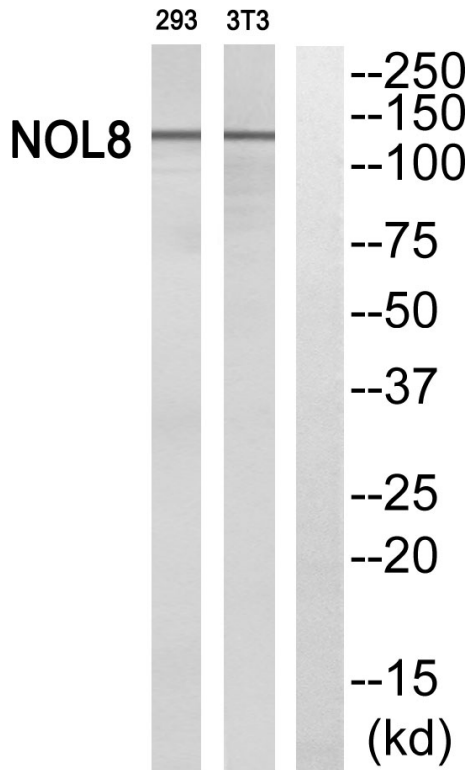
Western Blot analysis of NIH-3T3 cells using Nop132 Polyclonal Antibody diluted at 1:1000 cells nucleus extracted by Minute TM Cytoplasmic and Nuclear Fractionation kit (SC-003, Inventbiotech, MN, USA).

Nanjing BYabscience technology Co.,Ltd

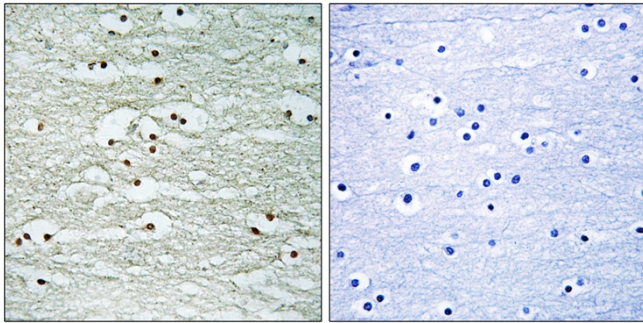
网址: www.njbybio.com

官方热线: 025-5229-8998

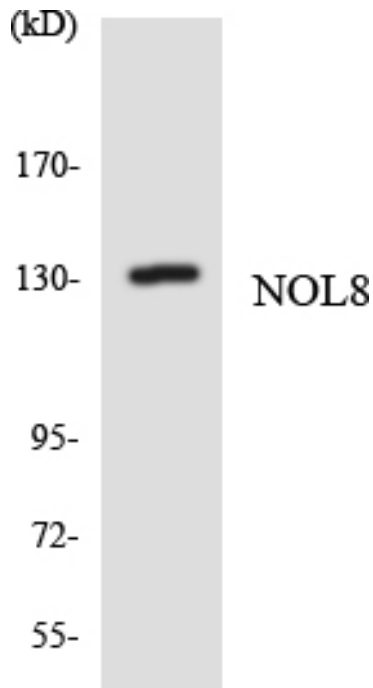
监督电话: 15950492658



Western blot analysis of NOL8 Antibody. The lane on the right is blocked with the NOL8 peptide.



Immunohistochemistry analysis of paraffin-embedded human brain, using NOL8 Antibody. The lane on the right is blocked with the NOL8 peptide.



Western blot analysis of the lysates from HepG2 cells using NOL8 antibody.

Nanjing BYabs science technology Co.,Ltd

网址: www.njbybio.com

官方热线: 025-5229-8998

监督电话: 15950492658