



# BNIP-2 Polyclonal Antibody

<b>Catalog No</b>	BYab-00330
<b>Isotype</b>	IgG
<b>Reactivity</b>	Human;Mouse
<b>Applications</b>	WB;IHC;IF;ELISA
<b>Gene Name</b>	BNIP2
<b>Protein Name</b>	BCL2/adenovirus E1B 19 kDa protein-interacting protein 2
<b>Immunogen</b>	The antiserum was produced against synthesized peptide derived from human BNIP-2. AA range:73-122
<b>Specificity</b>	BNIP-2 Polyclonal Antibody detects endogenous levels of BNIP-2 protein.
<b>Formulation</b>	Liquid in PBS containing 50% glycerol, 0.5% BSA and 0.02% sodium azide.
<b>Source</b>	Polyclonal, Rabbit,IgG
<b>Purification</b>	The antibody was affinity-purified from rabbit antiserum by affinity-chromatography using epitope-specific immunogen.
<b>Dilution</b>	WB: 1/500 - 1/2000. IHC: 1/100 - 1/300. ELISA: 1/40000.. IF 1:50-200
<b>Concentration</b>	1 mg/ml
<b>Purity</b>	≥90%
<b>Storage Stability</b>	-20°C/1 year
<b>Synonyms</b>	BNIP2; NIP2; BCL2/adenovirus E1B 19 kDa protein-interacting protein 2
<b>Observed Band</b>	36kD
<b>Cell Pathway</b>	Cytoplasm. Cytoplasm, perinuclear region. Localizes to the nuclear envelope region and to other cytoplasmic structures.
<b>Tissue Specificity</b>	Eye,Platelet,
<b>Function</b>	function:Implicated in the suppression of cell death. Interacts with the BCL-2 and adenovirus E1B 19 kDa proteins.,similarity:Contains 1 CRAL-TRIO domain.,subcellular location:Localizes to the nuclear envelope region and to other cytoplasmic structures.,
<b>Background</b>	This gene is a member of the BCL2/adenovirus E1B 19 kd-interacting protein (BNIP) family. It interacts with the E1B 19 kDa protein, which protects cells from virally-induced cell death. The encoded protein also interacts with E1B 19 kDa-like sequences of BCL2, another apoptotic protector. Alternate splicing results in multiple transcript variants. [provided by RefSeq, Mar 2016],

**Nanjing BYabscience technology Co.,Ltd**



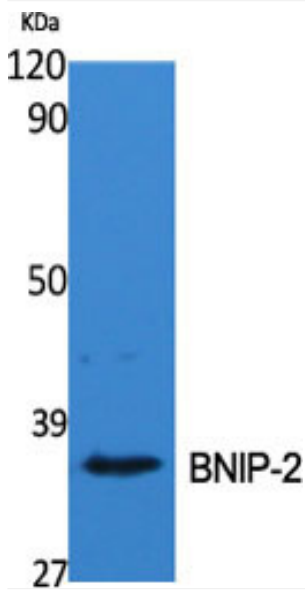
**matters needing attention**

Avoid repeated freezing and thawing!

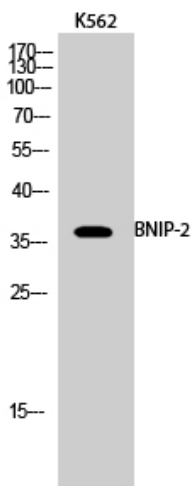
**Usage suggestions**

This product can be used in immunological reaction related experiments. For more information, please consult technical personnel.

**Products Images**



Western Blot analysis of various cells using BNIP-2 Polyclonal Antibody



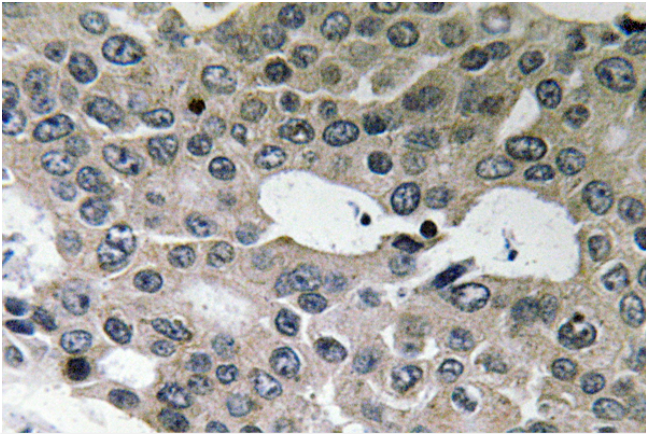
Western Blot analysis of K562 cells using BNIP-2 Polyclonal Antibody

**Nanjing BYabs science technology Co.,Ltd**

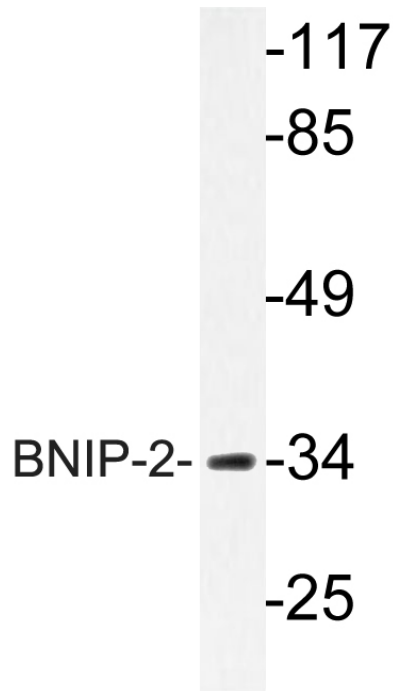
网址: [www.njbybio.com](http://www.njbybio.com)

官方热线: 025-5229-8998

监督电话: 15950492658



Immunohistochemistry analysis of BNIP-2 antibody in paraffin-embedded human breast carcinoma tissue.



Western blot analysis of lysate from Jurkat cells, using BNIP-2 antibody.