



AGR3 Polyclonal Antibody

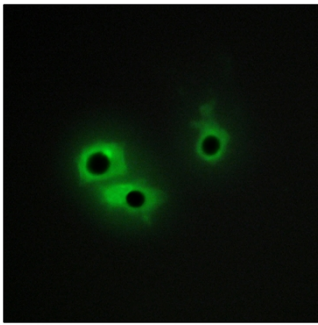
Catalog No	BYab-00294
Isotype	IgG
Reactivity	Human;Mouse
Applications	IHC;IF;ELISA
Gene Name	AGR3
Protein Name	Anterior gradient protein 3 homolog
Immunogen	The antiserum was produced against synthesized peptide derived from human AGR3. AA range:1-50
Specificity	AGR3 Polyclonal Antibody detects endogenous levels of AGR3 protein.
Formulation	Liquid in PBS containing 50% glycerol, 0.5% BSA and 0.02% sodium azide.
Source	Polyclonal, Rabbit,IgG
Purification	The antibody was affinity-purified from rabbit antiserum by affinity-chromatography using epitope-specific immunogen.
Dilution	Immunohistochemistry: 1/100 - 1/300. Immunofluorescence: 1/200 - 1/1000. ELISA: 1/5000. Not yet tested in other applications.
Concentration	1 mg/ml
Purity	≥90%
Storage Stability	-20°C/1 year
Synonyms	AGR3; BCMP11; Anterior gradient protein 3 homolog; AG-3; AG3; hAG-3; Breast cancer membrane protein 11
Observed Band	
Cell Pathway	Endoplasmic reticulum . Found in the cytoplasm, which could include the endoplasmic reticulum. .
Tissue Specificity	Expressed in the lung, in the ciliated cells of the airway epithelium (PubMed:25751668). Expression increased with differentiation of airway epithelial cells (PubMed:25751668). Not detected in the mucous cells (PubMed:25751668). Expressed in ciliated cells in the oviduct (PubMed:26170690). Also detected in stomach, colon, prostate and liver (PubMed:25751668). Expressed in breast, ovary, prostate and liver cancer (PubMed:26170690). Expression is associated with the level of differentiation of breast cancer (at protein level) (PubMed:26170690).
Function	similarity:Belongs to the AGR family.,subunit:Interacts with LYPD3 and alpha-dystroglycan.,

Nanjing BYabscience technology Co.,Ltd

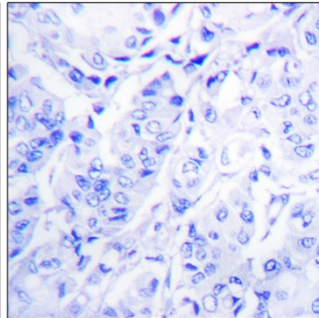
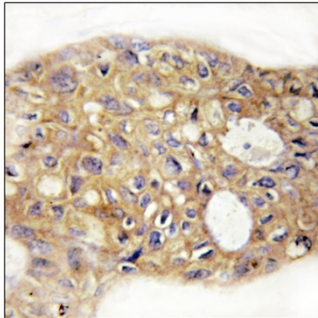


Background	similarity:Belongs to the AGR family.,subunit:Interacts with LYPD3 and alpha-dystroglycan.,
matters needing attention	Avoid repeated freezing and thawing!
Usage suggestions	This product can be used in immunological reaction related experiments. For more information, please consult technical personnel.

Products Images



Immunofluorescence analysis of COS7 cells, using AGR3 Antibody. The picture on the right is blocked with the synthesized peptide.



Immunohistochemistry analysis of paraffin-embedded human breast carcinoma tissue, using AGR3 Antibody. The picture on the right is blocked with the synthesized peptide.

Nanjing BYabscience technology Co.,Ltd

网址: www.njbybio.com

官方热线: 025-5229-8998

监督电话: 15950492658