



# TOB1 (phospho Ser164) Polyclonal Antibody

<b>Catalog No</b>	BYab-00215
<b>Isotype</b>	IgG
<b>Reactivity</b>	Human;Mouse;Rat
<b>Applications</b>	WB;IHC;IF;ELISA
<b>Gene Name</b>	TOB1
<b>Protein Name</b>	Protein Tob1
<b>Immunogen</b>	The antiserum was produced against synthesized peptide derived from human TOB1 around the phosphorylation site of Ser164. AA range:130-179
<b>Specificity</b>	Phospho-TOB1 (S164) Polyclonal Antibody detects endogenous levels of TOB1 protein only when phosphorylated at S164.
<b>Formulation</b>	Liquid in PBS containing 50% glycerol, 0.5% BSA and 0.02% sodium azide.
<b>Source</b>	Polyclonal, Rabbit,IgG
<b>Purification</b>	The antibody was affinity-purified from rabbit antiserum by affinity-chromatography using epitope-specific immunogen.
<b>Dilution</b>	WB: 1/500 - 1/2000. IHC: 1/100 - 1/300. ELISA: 1/5000.. IF 1:50-200
<b>Concentration</b>	1 mg/ml
<b>Purity</b>	≥90%
<b>Storage Stability</b>	-20°C/1 year
<b>Synonyms</b>	TOB1; TOB; TROB1; Protein Tob1; Transducer of erbB-2 1
<b>Observed Band</b>	40kD
<b>Cell Pathway</b>	Cytoplasm . Nucleus . Only a small fraction localizes to the cytoplasm except in late S-phase where more than half of proteins become cytoplasmic. .
<b>Tissue Specificity</b>	Ubiquitous.
<b>Function</b>	function:Anti-proliferative protein that interacts with the erbB-2 receptor tyrosine kinase. May physically and/or functionally interact with protein-tyrosine kinase receptors.,PTM:Phosphorylated on Ser and Thr residues.,similarity:Belongs to the BTG family.,subunit:Interacts with CNOT7.,tissue specificity:Ubiquitous.,
<b>Background</b>	This gene encodes a member of the transducer of erbB-2 /B-cell translocation gene protein family. Members of this family are anti-proliferative factors that have the potential to regulate cell growth. The encoded protein may function as a tumor suppressor. Alternate splicing results in multiple transcript variants. [provided by RefSeq, Aug 2011],

Nanjing BYabscience technology Co.,Ltd



**matters needing attention**

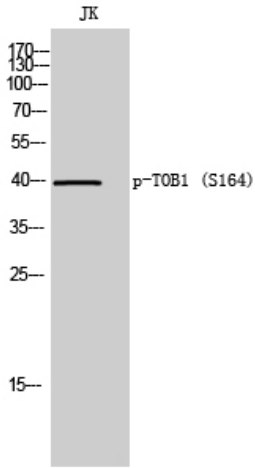
Avoid repeated freezing and thawing!

**Usage suggestions**

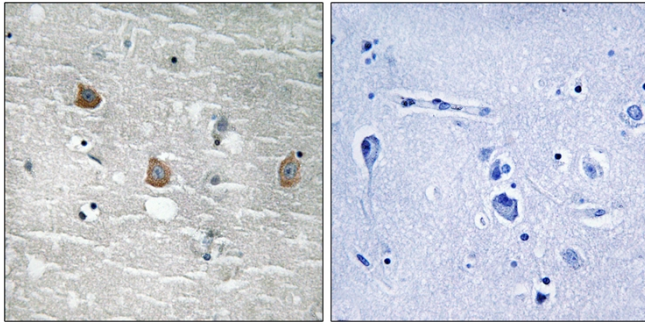
This product can be used in immunological reaction related experiments. For more information, please consult technical personnel.



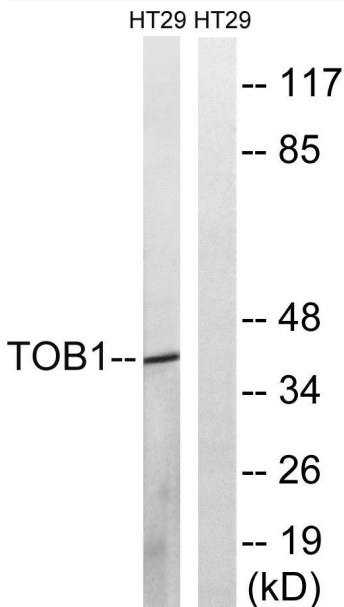
## Products Images



Western Blot analysis of JK cells using Phospho-TOB1 (S164) Polyclonal Antibody



Immunohistochemistry analysis of paraffin-embedded human brain, using TOB1 (Phospho-Ser164) Antibody. The picture on the right is blocked with the phospho peptide.



Western blot analysis of lysates from HT29 cells treated with serum 20% 15', using TOB1 (Phospho-Ser164) Antibody. The lane on the right is blocked with the phospho peptide.