



WWOX (phospho Tyr33) Polyclonal Antibody

Catalog No	BYab-00213
Isotype	IgG
Reactivity	Human;Mouse
Applications	WB;IHC;IF;ELISA
Gene Name	WWOX
Protein Name	WW domain-containing oxidoreductase
Immunogen	The antiserum was produced against synthesized peptide derived from human WWOX around the phosphorylation site of Tyr33. AA range:18-67
Specificity	Phospho-WWOX (Y33) Polyclonal Antibody detects endogenous levels of WWOX protein only when phosphorylated at Y33.
Formulation	Liquid in PBS containing 50% glycerol, 0.5% BSA and 0.02% sodium azide.
Source	Polyclonal, Rabbit,IgG
Purification	The antibody was affinity-purified from rabbit antiserum by affinity-chromatography using epitope-specific immunogen.
Dilution	WB: 1/500 - 1/2000. IHC: 1/100 - 1/300. ELISA: 1/10000.. IF 1:50-200
Concentration	1 mg/ml
Purity	≥90%
Storage Stability	-20°C/1 year
Synonyms	WWOX; FOR; WOX1; WW domain-containing oxidoreductase; Fragile site FRA16D oxidoreductase
Observed Band	55kD
Cell Pathway	
Tissue Specificity	
Function	disease:Defects in WWOX may be involved in esophageal squamous cell carcinoma (ESCC) [MIM:133239].,disease:Defects in WWOX may be involved in several cancer types. The gene spans the second most common chromosomal fragile site (FRA16D) which is frequently altered in cancers. Alteration of the expression and expression of some isoforms is associated with cancers. However, it is still unclear if alteration of WWOX is directly implicated in cancerogenesis or if it corresponds to a secondary effect.,domain:The WW 1 domain mediates interaction with TP53, and probably TP73, TFAP2C, LITAF and WBP1.,function:Probable oxidoreductase, which acts as a tumor suppressor and plays a role in apoptosis. May function synergistically with TP53/p53 to control

Nanjing BYabscience technology Co.,Ltd



genotoxic stress-induced cell death. May also play a role in tumor necrosis factor (TNF)-mediated cell death.,PTM:Phosphorylated upon genotoxic stress

Background

disease:Defects in WWOX may be involved in esophageal squamous cell carcinoma (ESCC) [MIM:133239].,disease:Defects in WWOX may be involved in several cancer types. The gene spans the second most common chromosomal fragile site (FRA16D) which is frequently altered in cancers. Alteration of the expression and expression of some isoforms is associated with cancers. However, it is still unclear if alteration of WWOX is directly implicated in cancerogenesis or if it corresponds to a secondary effect.,domain:The WW 1 domain mediates interaction with TP53, and probably TP73, TFAP2C, LITAF and WBP1.,function:Probable oxidoreductase, which acts as a tumor suppressor and plays a role in apoptosis. May function synergistically with TP53/p53 to control genotoxic stress-induced cell death. May also play a role in tumor necrosis factor (TNF)-mediated cell death.,PTM:Phosphorylated upon genotoxic stress. Phosphorylation of Tyr-33 regulates interaction with TP53, TP73 and MAPK8. May also regulate proapoptotic activity.,similarity:Belongs to the short-chain dehydrogenases/reductases (SDR) family.,similarity:Contains 2 WW domains.,subcellular location:Partially localizes to the mitochondria. Translocates to the nucleus upon genotoxic stress or TNF stimulation (By similarity). Isoform 5 and isoform 6 may localize in the nucleus.,subunit:Interacts with TP53, TP73/p73 and MAPK8. Interacts with MAPT/TAU (By similarity). Forms a ternary complex with TP53 and MDM2. Interacts with ERBB4, LITAF and WBP1. May interact with COTE1/C1orf2 and SCOTIN.,tissue specificity:Widely expressed. Strongly expressed in testis, prostate, and ovary. Overexpressed in cancer cell lines. Isoform 5 and isoform 6 may only be expressed in tumor cell lines.,

matters needing attention

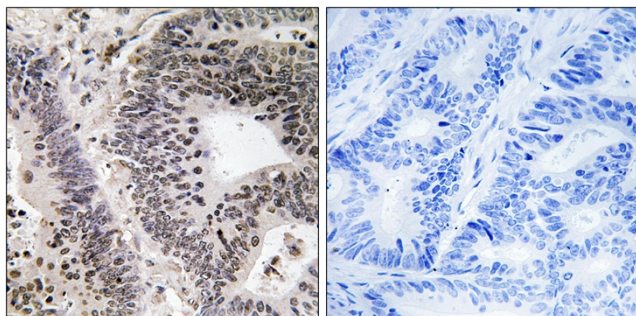
Avoid repeated freezing and thawing!

Usage suggestions

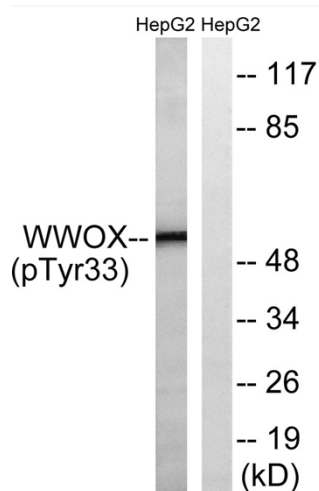
This product can be used in immunological reaction related experiments. For more information, please consult technical personnel.



Products Images



Immunohistochemistry analysis of paraffin-embedded human colon carcinoma, using WWOX (Phospho-Tyr33) Antibody. The picture on the right is blocked with the phospho peptide.



Western blot analysis of lysates from HepG2 cells treated with PMA 125ng/ml 30', using WWOX (Phospho-Tyr33) Antibody. The lane on the right is blocked with the phospho peptide.