



CD318 (phospho Tyr707) Polyclonal Antibody

Catalog No	BYab-00152
Isotype	IgG
Reactivity	Human;Mouse
Applications	WB;ELISA
Gene Name	CDCP1
Protein Name	CUB domain-containing protein 1
Immunogen	Synthesized phospho-peptide around the phosphorylation site of human CD318 (phospho Tyr707)
Specificity	Phospho-CD318 (Y707) Polyclonal Antibody detects endogenous levels of CD318 protein only when phosphorylated at Y707.
Formulation	Liquid in PBS containing 50% glycerol, 0.5% BSA and 0.02% sodium azide.
Source	Polyclonal, Rabbit,IgG
Purification	The antibody was affinity-purified from rabbit antiserum by affinity-chromatography using epitope-specific immunogen.
Dilution	Western Blot: 1/500 - 1/2000. ELISA: 1/10000. Not yet tested in other applications.
Concentration	1 mg/ml
Purity	≥90%
Storage Stability	-20°C/1 year
Synonyms	CDCP1; TRASK; CUB domain-containing protein 1; Membrane glycoprotein gp140; Subtractive immunization M plus HEp3-associated 135 kDa protein; SIMA135; Transmembrane and associated with src kinases; CD antigen CD318
Observed Band	140,80kD
Cell Pathway	[Isoform 1]: Cell membrane ; Single-pass membrane protein . Shedding may also lead to a soluble peptide.; [Isoform 3]: Secreted.
Tissue Specificity	Highly expressed in mitotic cells with low expression during interphase. Detected at highest levels in skeletal muscle and colon with lower levels in kidney, small intestine, placenta and lung. Up-regulated in a number of human tumor cell lines, as well as in colorectal cancer, breast carcinoma and lung cancer. Also expressed in cells with phenotypes reminiscent of mesenchymal stem cells and neural stem cells.
Function	function:May be involved in cell adhesion and cell matrix association. May play a role in the regulation of anchorage versus migration or proliferation versus differentiation via its phosphorylation. May be a novel marker for leukemia diagnosis and for immature hematopoietic stem cell subsets. Belongs to the

Nanjing BYabscience technology Co.,Ltd



tetraspanin web involved in tumor progression and metastasis.,PTM:A soluble form may also be produced by proteolytic cleavage at the cell surface (shedding). Another peptide of 80 kDa (p80) is present in cultured keratinocytes probably due to tryptic cleavage at an unidentified site on its N-terminal side. Converted to p80 by plasmin, a trypsin-like protease.,PTM:N-glycosylated.,PTM:Phosphorylated on tyrosine by kinases of the SRC family such as SRC and YES as well as by the protein kinase C gamma/PRKCG. Dephosphorylated by phosphotyrosine phosphatases. Also phosphorylated by suramin

Background

This gene encodes a transmembrane protein which contains three extracellular CUB domains and acts as a substrate for Src family kinases. The protein plays a role in the tyrosine phosphorylation-dependent regulation of cellular events that are involved in tumor invasion and metastasis. Alternative splicing results in multiple transcript variants of this gene. [provided by RefSeq, May 2013],

matters needing attention

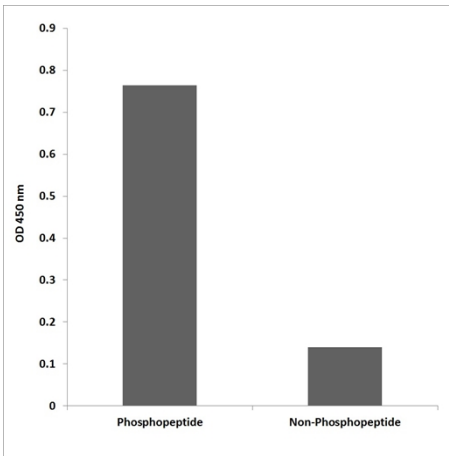
Avoid repeated freezing and thawing!

Usage suggestions

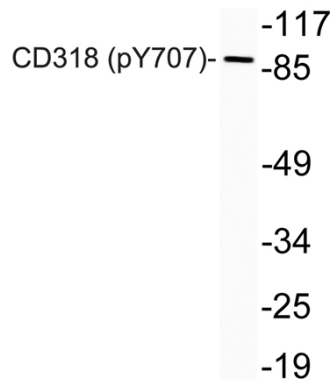
This product can be used in immunological reaction related experiments. For more information, please consult technical personnel.



Products Images



Enzyme-Linked Immunosorbent Assay
(Phospho-ELISA) for Immunogen Phosphopeptide
(Phospho-left) and Non-Phosphopeptide
(Phospho-right), using CD318 (Phospho-Tyr707)
Antibody



Western blot analysis of lysates from Jurkat cells, using
phospho-CD318 (Phospho-Tyr707) antibody.

Nanjing BYabscience technology Co.,Ltd

网址: www.njbybio.com

官方热线: 025-5229-8998

监督电话: 15950492658