



Ku-70 (Acetyl Lys331) Polyclonal Antibody

| | |
|---------------------------|---|
| Catalog No | BYab-00051 |
| Isotype | IgG |
| Reactivity | Human;Mouse;Rat |
| Applications | WB;IHC |
| Gene Name | XRCC6 |
| Protein Name | X-ray repair cross-complementing protein 6 |
| Immunogen | The antiserum was produced against synthesized Acetyl-peptide derived from human Ku70 around the Acetylation site of Lys331. AA range:291-340 |
| Specificity | Acetyl-Ku-70 (K331) Polyclonal Antibody detects endogenous levels of Ku-70 protein only when acetylated at K331. |
| Formulation | Liquid in PBS containing 50% glycerol, 0.5% BSA and 0.02% sodium azide. |
| Source | Polyclonal, Rabbit,IgG |
| Purification | The antibody was affinity-purified from rabbit antiserum by affinity-chromatography using epitope-specific immunogen. |
| Dilution | WB 1:500-2000;IHC-p 1:50-300 |
| Concentration | 1 mg/ml |
| Purity | ≥90% |
| Storage Stability | -20°C/1 year |
| Synonyms | XRCC6; G22P1; X-ray repair cross-complementing protein 6; 5'-deoxyribose-5-phosphate lyase Ku70; 5'-dRP lyase Ku70; 70 kDa subunit of Ku antigen; ATP-dependent DNA helicase 2 subunit 1; ATP-dependent DNA helicase II 70 kDa subunit;CTC box-binding factor 75 kDa subunit; CTC75; CTCBF; DNA repair protein XRCC6; Lupus Ku autoantigen protein p70; Ku70; Thyroid-lupus autoantigen; TLAA; X-ray repair complementing defective repair in Chinese hamster cells 6 |
| Observed Band | 70kD |
| Cell Pathway | Nucleus . Chromosome . |
| Tissue Specificity | Brain,Cervix carcinoma,Epithelium,Heart,Hepatocyte,Kidney,Liver,Lun |
| Function | developmental stage:Expression does not increase during promyelocyte differentiation.,disease:Individuals with systemic lupus erythematosus (SLE) and related disorders produce extremely large amounts of autoantibodies to p70 and |

Nanjing BYabscience technology Co.,Ltd



p86. Existence of a major autoantigenic epitope or epitopes on the C-terminal 190 amino acids of p70 containing the leucine repeat. The majority of autoantibodies to p70 in most sera from patients with SLE seem to be reactive with this region. function: Single stranded DNA-dependent ATP-dependent helicase. Has a role in chromosome translocation. The DNA helicase II complex binds preferentially to fork-like ends of double-stranded DNA in a cell cycle-dependent manner. It works in the 3'-5' direction. Binding to DNA may be mediated by p70. Involved in DNA nonhomologous end joining (NHEJ) required for double-strand break repair and V(D)J recombination. The Ku p70/p86

Background

The p70/p80 autoantigen is a nuclear complex consisting of two subunits with molecular masses of approximately 70 and 80 kDa. The complex functions as a single-stranded DNA-dependent ATP-dependent helicase. The complex may be involved in the repair of nonhomologous DNA ends such as that required for double-strand break repair, transposition, and V(D)J recombination. High levels of autoantibodies to p70 and p80 have been found in some patients with systemic lupus erythematosus. [provided by RefSeq, Jul 2008],

matters needing attention

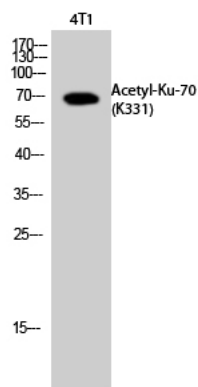
Avoid repeated freezing and thawing!

Usage suggestions

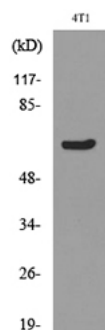
This product can be used in immunological reaction related experiments. For more information, please consult technical personnel.



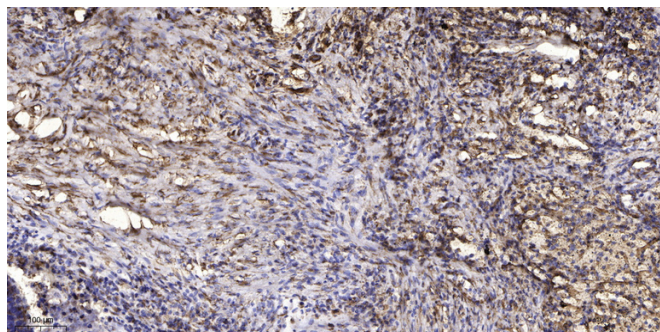
Products Images



Western Blot analysis of 4T1 cells using Acetyl-Ku-70 (K331) Polyclonal Antibody. Secondary antibody(catalog#:RS0002) was diluted at 1:20000



Western blot analysis of lysate from 4T1 cells, using Ku70 (Acetyl-Lys331) Antibody.



Immunohistochemical analysis of paraffin-embedded human Squamous cell carcinoma of lung. 1, Antibody was diluted at 1:200(4° overnight). 2, Tris-EDTA,pH9.0 was used for antigen retrieval. 3,Secondary antibody was diluted at 1:200(room temperature, 45min).

Nanjing BYabs science technology Co.,Ltd

网址: www.njbybio.com

官方热线: 025-5229-8998

监督电话: 15950492658